



NC 系列气源处理件 / NC Series air source treatment unit



- 1、滴油结构采用间隙密封式，给油调节更稳定可靠；
- 2、给油调节环可旋转一周，给油大小基本呈线状分布，可根据刻度环位置大致推算出给油量大小；
- 3、可不停气加油；
- 4、特殊的滴油嘴结构，使滴油出口处产生负压，起雾油量底；
- 5、快速，可靠的固定连接，安装使用方便；
- 6、压力调节稳定，重复精度高；
- 7、高效率的水份和固体颗粒去除功能；
- 8、有手动，差压和自动排水等三种排水形式可供选择。

- 1.Oil dripping adopts gap seal structure,which makes the adjustment of oil supply more reliable.
- 2.Oil feed ring can only make one full turn. The quantity of oil supply,basically taking on linear distribution.
- 3.Filling of oil while the lubricator is under pressure is made possible.
- 4.Special drip nozzle structure will produce negative pressure in oil dripping outlet and the mist flow is minimal.
- 5.Quick and reliable mounting clamps makes it convenient to install and use.
- 6.The performance of pressure adjustment is reliable with high precision.
- 7.The efficiency of eliminating moisture and solid grain is high.
- 8.Three drain types are available:manual drain,semi-auto drain and automatic drain.

综合参数 /General data

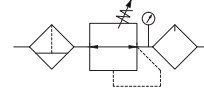
介质 /Fluid	空气 /Air
滤芯精度 /Grade of filtration	40μm or 5μm
调压范围 /Pressure range	自动排水阀式: 0.15 ~ 0.9MPa; 手动排水式: 0.05 ~ 0.9MPa / Semi-auto and automatic drain:0.15 ~ 0.9MPa;Manual drain:0.05 ~ 0.9MPa
最高使用压力 /Max.pressure	1.0MPa
保证耐压力 /Proof pressure	1.5MPa
使用温度范围 /Temperature range	-5 ~ 70℃
建议润滑油 /Recommended lubricant	ISO VG 32 或同级用油 / ISO VG 32 or equivalent

NC 系列订购码 / NC Series ordering code

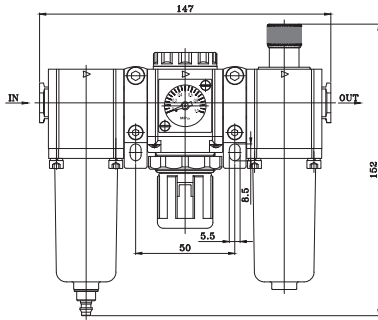
	NC	200	-	08	D
NC 系列 /NC Series code					
阀体尺寸 / Body size					
200	200 系列阀体 / 2 Valve body				
300	300 系列阀体 / 3 Valve body				
接管口径 / Joint pipe bore					
06	1/8				
08	1/4				
10	3/8				
15	1/2				
排水方式 /Drain patterns					
空白 /Blank	差压排水 / Pressure drain				
D	自动排水 / Automatic drain				

NC 系列气源处理件 / NC Series air source treatment unit

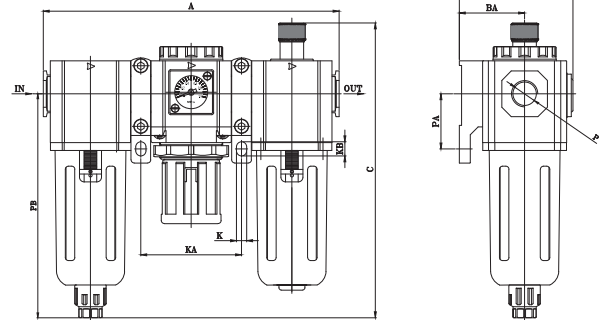
空气过滤组合 (三联件)
Air filter combination (F.R.L combination)



NC200



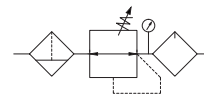
NC300



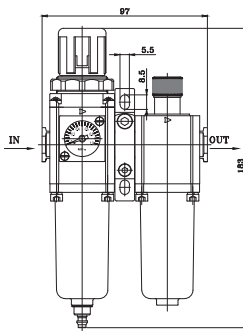
型号 / Model	A	B	BA	C	K	KA	KB	P	PA	PB	Q
NC300-08	188.5	70.5	41.5	182.5	6	64	8.5	G1/4	35	141	G1/8
NC300-10	188.5	70.5	41.5	182.5	6	64	8.5	G3/8	35	141	G1/8
NC300-15	188.5	70.5	41.5	182.5	6	64	8.5	G1/2	35	141	G1/8

NC 系列气源处理件 / NC Series air source treatment unit

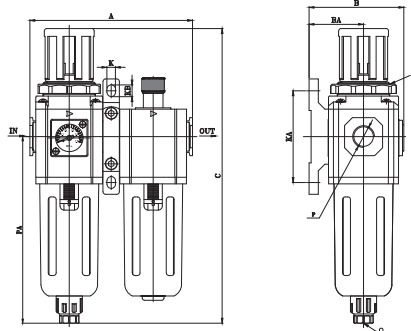
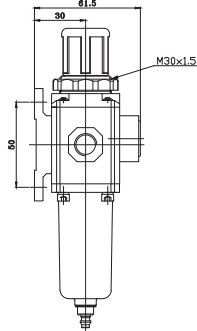
空气过滤组合 (二联件)
Air filter combination (FR.L combination)



NFC200



NFC300



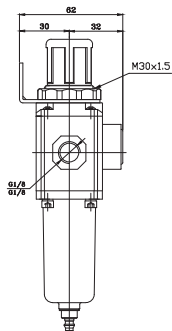
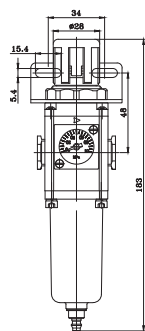
型号 / Model	A	B	BA	C	D	K	KA	KB	P	PA	Q
NFC300-08	124	70.5	41.5	224	M40X1.5	6	70	8.5	G1/4	144	G1/8
NFC300-10	124	70.5	41.5	224	M40X1.5	6	70	8.5	G3/8	144	G1/8
NFC300-15	124	70.5	41.5	224	M40X1.5	6	70	8.5	G1/2	144	G1/8

NFR 系列气源处理件 / NFR Series air source treatment unit

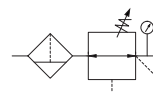
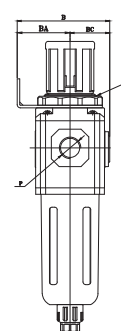
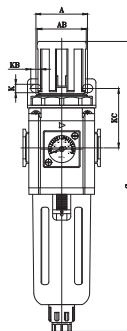
过滤减压阀
Filter and regulator



NFR200



NFR300



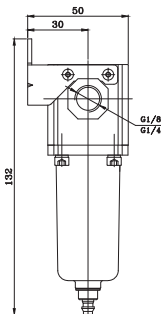
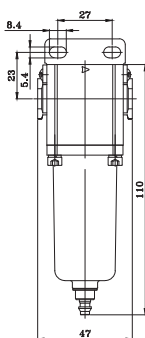
型号 / Model	A	AB	AC	B	BA	BC	C	D	K	KA	KB	KC	P	PA	Q
NFR300-08	60	53	38	72	41	31	224	M40X1.5	6	40	7.5	46	G1/4	145	G1/8
NFR300-10	60	53	38	72	41	31	224	M40X1.5	6	40	7.5	46	G3/8	145	G1/8
NFR300-15	60	53	38	72	41	31	224	M40X1.5	6	40	7.5	46	G1/2	145	G1/8

NF 系列气源处理件 / NF Series air source treatment unit

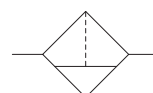
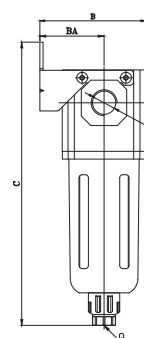
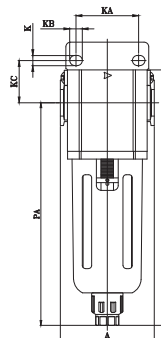
空气过滤器
Air filter



NF200



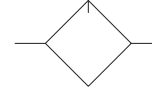
NF300



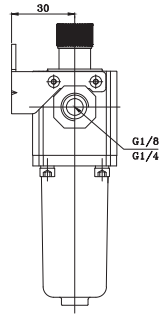
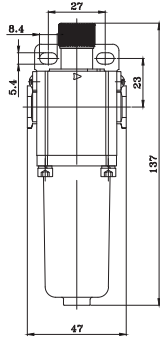
型号 / Model	A	B	BA	C	CA	K	KA	KB	KC	P	PA	Q
NF300-08	60	67	41	182.5	161	6	40	8	27	G1/4	140	G1/8
NF300-10	60	67	41	182.5	161	6.5	40	8	27	G3/8	140	G1/8
NF300-15	60	67	41	182.5	161	6.5	40	8	27	G1/2	140	G1/8

NL 系列气源处理件 / NL Series air source treatment unit

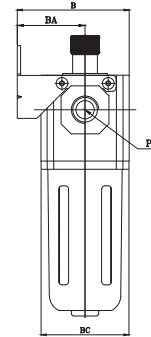
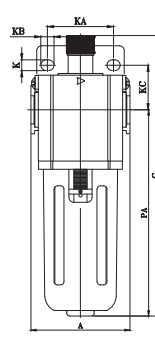
油雾器
Lubricator



NL200



NL300



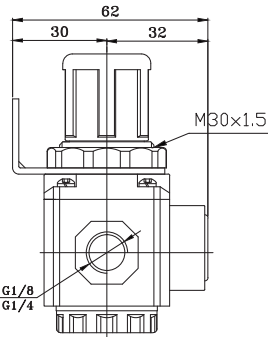
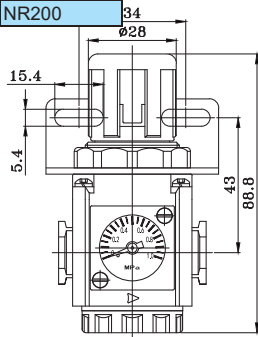
型号 / Model	A	B	BA	BC	C	K	KA	KB	KC	P	PA
NL300-08	60	68	41	53	168	6.5	40	8	27	G1/4	123.5
NL300-10	60	68	41	53	168	6.5	40	8	27	G3/8	123.5
NL300-15	60	68	41	53	168	6.5	40	8	27	G1/2	123.5

NR 系列气源处理件 / NR Series air source treatment unit

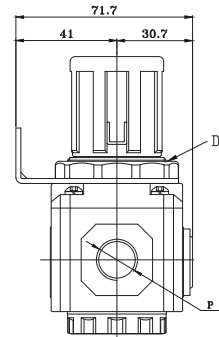
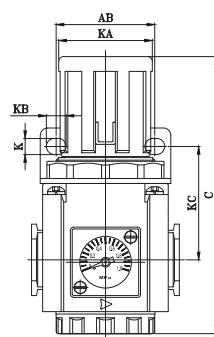
减压阀
Regulator



NR200



NR300



型号 / Model	A	AB	AC	B	BA	BC	C	D	K	KA	KB	KC	P
NR300-08	60	53	38	72	41	31	112	M40X1.5	6.5	40	8	92.5	G1/4
NR300-10	60	53	38	72	41	31	112	M40X1.5	6.5	40	8	92.5	G3/8
NR300-15	60	53	38	72	41	31	112	M40X1.5	6.5	40	8	92.5	G1/2

FRC 系列气源处理件 / FRC Series air source treatment unit



FRC 型三联件有一个 LFR 型过滤减压阀和一个 LOE 型油雾器组合，这些元件可以分别订购，分水过滤器能过滤空气中的液态油，冷凝水和杂质，对于特殊应用场合，5μm 滤芯容易替换 40μm 的标准滤芯。即使输入压力与压缩空气消耗产生的系统波动，减压阀也能保有证实其设定的工作压力稳定。油雾器可以均匀地向过滤空气中喷油雾，其油雾量与空气流量成正比，并可不停气加油，可通过调节螺钉来调节滴油量，通常每 1000L 空气中含有 1 - 12 滴就足够了。

The FRC consisted of LFR and LOE,each unit can be ordered separately.

The LF with water separator cleans the compressed air of fluid oil,condensation and dirt.Particles.For special applicaton,the standard 40μm filter element may easily be replaced by a 5μm filter element.

The LR maintain inputting constant operating pressure despite fluctuation in line pressure and the amount of air consumed.The proportional to the flow and lil can be added during operation.The oil drip rate is controled by the adjustable bolt.Normally,1to12 drops/1000 or the air is sufficient.

综合参数 / General data

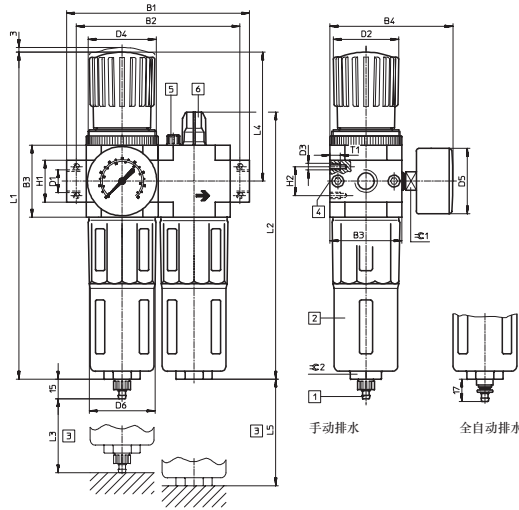
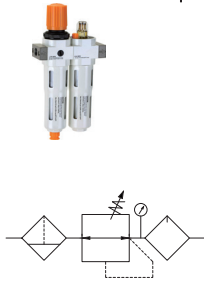
介质 / Fluid	空气 / Air
滤芯精度 / Grade of filtration	40μm or 5μm
调压范围 / Pressure range	自动排水阀式: 0.15 ~ 0.9MPa; 手动排水式: 0.05 ~ 0.9MPa / Semi-auto and automatic drain: 0.15 ~ 0.9MPa; Manual drain: 0.05 ~ 0.9MPa
最高使用压力 / Max. pressure	1.2MPa
保证耐压力 / Proof pressure	1.6MPa
使用温度范围 / Temperature range	-5 ~ 70°C
建议润滑油 / Recommended lubricant	ISO VG 32 或同级用油 / ISO VG 32 or equivalent

FRC 系列订购码 / FRC Series ordering code

		FRC	-	1/8	-	-	-	-	-	MINI	-	
系列 / Series		FRC	三联件 / LFR+LOE Combination									
		LFR	二联件 / LR+LF Filter and regulator									
		LR	减压阀 / Regulator									
		LOE	油雾器 / Lubricator									
		LF	过滤器 / Filter									
接管口径 / Joint pipe bore		1/8	G1/8									
		1/4	G1/4									
		3/8	G3/8									
		1/2	G1/2									
		3/4	G3/4									
		1	G1"									
压力调节范围 / Pressure regulation range			0.5...12bar									
		7	0.5...7bar									
过滤等级 / Grade of filtration			40μm									
		5M	5μm									
压力表 / Pressure gauge			带压力表 / With pressure gauge									
		0	不带压力表 / Without pressure gauge									
尺寸 / Size		MINI	小 / Mini									
		MIDI	中 / Midi									
		MIXI	大 / Mixi									
排水方式 / Condensate drain			手动 / Turned manually									
		S	半自动 / Semi-automatic									
		A	自动 / Fully automatic									

FRC 系列气源处理件 / FRC Series air source treatment unit

空气过滤组合 (三联件)
Air filter combination (F.R.L combination)



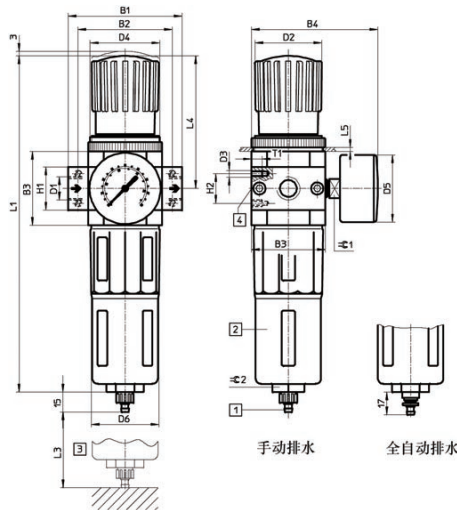
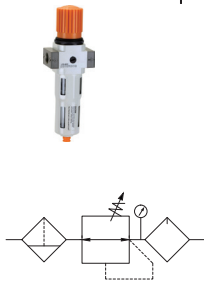
- 1 倒钩接头, 用于塑料气管
Barbed fitting for plastic tubing type PCN-4
- 2 金属保护罩 / Metal bowl guard
- 3 安装尺寸 / Installation dimensions
- 4 第二压力表接口
Second pressure gauge connection
- 5 带孔螺丝 / Bleed screw for oil reservoir
- 6 油量调节螺丝 / Oil adjusting screw

型号 / Model	B1	B2	B3	B4	D1	ΦD2	D3	D4	ΦD5	ΦD6
FRC-...-MINI	104	92	40	76	G1/8,G1/4,G3/8	31	M4	M36x1.5	41	38
FRC-...-MIDI	140	125	55	95	G3/8,G1/2,G3/4	50	M5	M52x1.5	50	52
FRC-...-MIXI	162,182	146,157	66	107	G3/4,G1	31	M5	M36x1.5	50	65

型号 / Model	H1	H2	L1	L2	L3	L4	L5	L8	L9	T1	≈1	≈2
FRC-...-MINI	20	11	193	169	60	69	100	15	19	7	14	22
FRC-...-MIDI	32	22	250	204	80	99	120	15	19	8	14	24
FRC-...-MIXI	32,40	22	252	228	90	82	150	15	19	8	14	24

LFR 系列气源处理件 / LFR Series air source treatment unit

空气过滤组合 (二联件)
Air filter combination (LFR) Filter Regulator



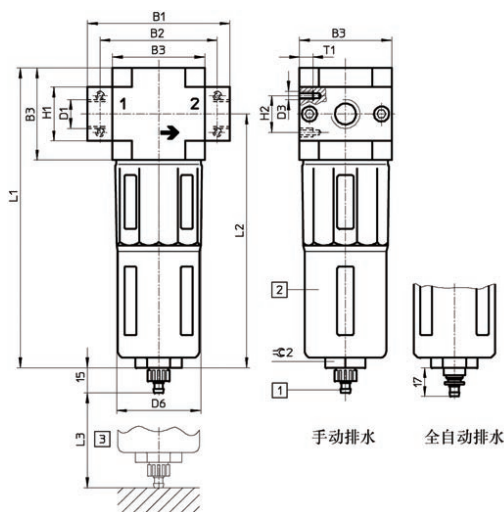
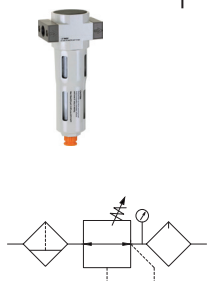
- 1 倒钩接头, 用于塑料气管
Barbed fitting for plastic tubing type PCN-4
- 2 金属保护罩 / Metal bowl guard
- 3 安装尺寸 / Installation dimensions
- 4 第二压力表接口
Second pressure gauge connection

型号 / Model	B1	B2	B3	B4	D1	ΦD2	D3	D4	ΦD5	ΦD6
LFR-...-MINI	64	52	40	76	G1/8,G1/4,G3/8	31	M4	M36x1.5	41	38
LFR-...-MIDI	85	70	55	95	G3/8,G1/2,G3/4	50	M5	M52x1.5	50	52
LFR-...-MIXI	96,116	80,91	66	107	G3/4,G1	31	M5	M36x1.5	50	65

型号 / Model	H1	H2	L1	L3	L4	L5	T1	≈1	≈2
LFR-...-MINI	20	11	193	60	69	3	7	14	22
LFR-...-MIDI	32	22	250	80	99	3	8	14	24
LFR-...-MIXI	32,40	22	252	90	82	4	8	14	24

LF 系列气源处理件 / LF Series air source treatment unit

空气过滤器
Air Filter



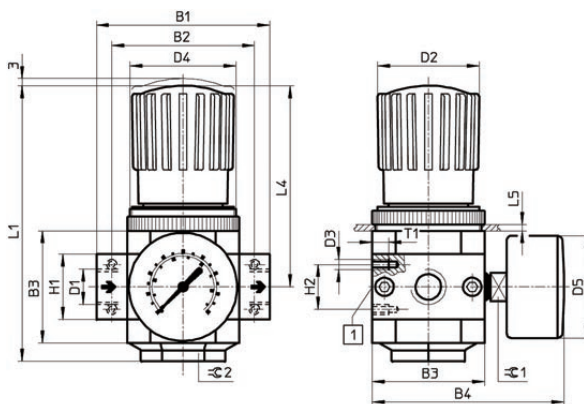
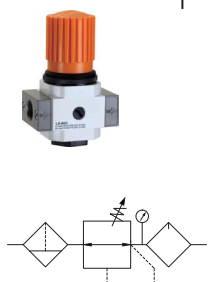
- 倒钩接头，用于塑料气管
Barbed fitting for plastic tubing type PCN-4
- ② 金属保护罩 / Metal bowl guard
- ③ 安装尺寸 / Installation dimensions

型号 /Model	B1	B2	B3	D1	D3	ΦD6
LF-...-MINI	64	52	40	G1/8,G1/4,G3/8	M4	38
LF-...-MIDI	85	70	55	G3/8,G1/2,G3/4	M5	52
LF-...-MIXI	96,116	80,91	66	G3/4,G1	M5	65

型号 /Model	H1	H2	L1	L2	L3	T1	≈2
LF-...-MINI	20	11	144	124	60	7	22
LF-...-MIDI	32	22	179	151	80	8	24
LF-...-MIXI	32,40	22	203	170	90	8	24

LR 系列气源处理件 / LR Series air source treatment unit

调压阀
Regulator



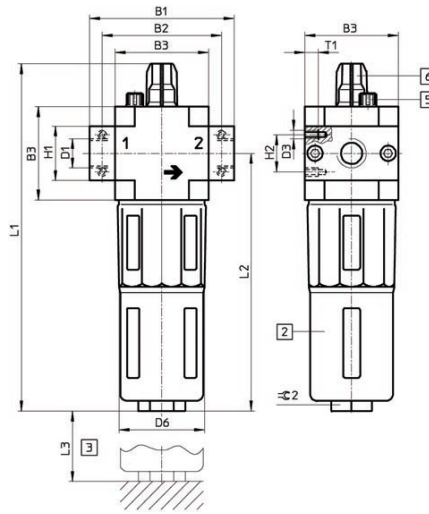
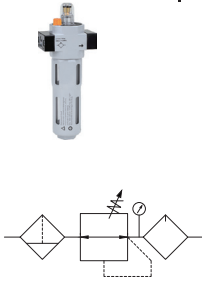
- 第二压力表接口
Second pressure gauge connection

型号 /Model	B1	B2	B3	B4	D1	ΦD2	D3	D4	ΦD5
LR-...-MINI	64	52	40	76	G1/8,G1/4,G3/8	31	M4	M36x1.5	41
LR-...-MIDI	85	70	55	95	G1/4,G3/8,G1/2,G3/4	50	M5	M52x1.5	50
LR-...-MIXI	96,116	80,91	66	107	G1/2,G3/4,G1	31	M5	M36x1.5	50

型号 /Model	H1	H2	L1	L4	L5	T1	≈1	≈2
LR-...-MINI	20	11	96	69	3	7	14	22
LR-...-MIDI	32	22	135	99	3	8	14	24
LR-...-MIXI	32,40	22	123	82	4	8	14	24

LOE 系列气源处理件 / LOE Series air source treatment unit

**油雾器
Lubricator**



- ② 金属保护罩 / Metal bowl guard
- ③ 安装尺寸 / Installation dimensions
- ⑤ 带孔螺丝 / Bleed screw for oil reservoir
- ⑥ 油量调节螺丝 / Oil adjusting screw

型号 / Model	B1	B2	B3	B4	D1	D3	ΦD6
LOE-...-MINI	64	52	40	30	G1/8, G1/4, G3/8	M4	38
LOE-...-MIDI	85	70	55	43	G3/8, G1/2, G3/4	M5	52
LOE-...-MIXI	96, 116	80, 91	66	46	G3/4, G1	M5	65

型号 / Model	H1	H2	L1	L2	T1	≈ 1	≈ 2
LOE-...-MINI	20	11	169	124	7	14	22
LOE-...-MIDI	32	22	204	151	8	14	24
LOE-...-MIXI	32, 40	22	228	170	8	14	24

AC 系列气源处理件 / AC Series air source treatment unit (F.R.L)

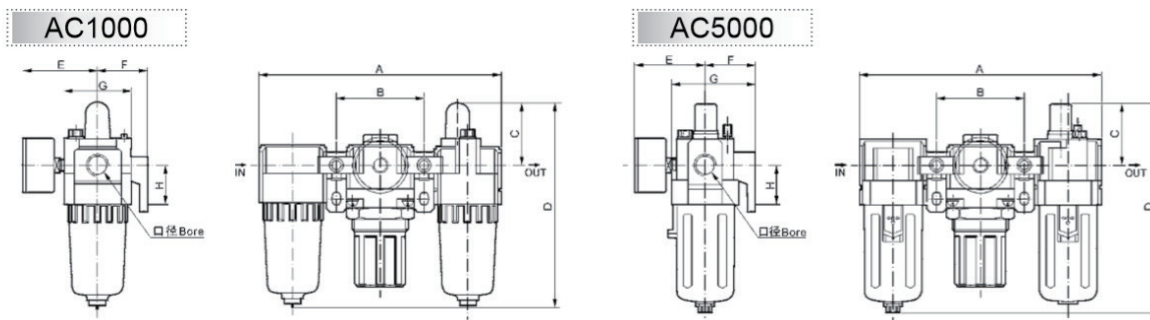


A	C	3000	-	03	D
A 系列 A Series	三联件 F.R.L Combination	1000 2000 3000	4000 5000	01 04 02 06 03 10	D: 自动排水 D: Automatic drain

规格 Specification

型号 / Model	AC1000-M5	AC2000-01	AC2000-02	AC2500-02	AC2500-03	AC3000-02	AC3000-03	AC4000-03	AC4000-04	AC4000-06	AC5000-06	AC5000-10	
额定流量 / Rated Flow	90	500	500	1500	1500	2000	2000	4000	4000	4500	5000	5000	
接管口径 / Joint Pipe Bore	M5	G1/8"	G1/4"	G1/4"	G3/8"	G1/4"	G3/8"	G3/8"	G1/2"	G3/4"	G3/4"	G1"	
过滤精度 / Filter Precision	25μm												
最高使用压力 Highest Working Pressure	1.0MPa												
保证耐压力 Ensured Pressure Resistance	1.5MPa												
使用温度范围 Operating Temperature Range	5~60°C												
调节压力范围 Range of Adjustable Pressure	0.05~0.7 MPa	0.05~0.85MPa											
建议用油 Recommended Oil Use	ISO VG 32												
容器材料 / Container Material	聚碳酸酯 / Poly Carbonate												
防护罩 / Protective Cover	无 / Not Available						有 / Available						
放水器功能 / Drain Function	差压放水 / Differential Drain						差压放水、自动放水 / Differential Drain, Automatic Drain						
阀型 / Valve Type	带溢流型 / With Overflow												
构成元件 Composing Elements	过滤器 / Filter	AF1000-M5	AF2000-01	AF2000-02	AF2500-02	AF2500-03	AF3000-02	AF3000-03	AF4000-03	AF4000-04	AF4000-06	AF5000-06	AF5000-10
	调压阀 Regulator	AR1000-M5	AR2000-01	AR2000-02	AR2500-02	AR2500-03	AR3000-02	AR3000-03	AR4000-03	AR4000-04	AR4000-06	AR5000-06	AR5000-10
	油压阀 Lubricator	AL1000-M5	AL2000-01	AL2000-02	AL2500-02	AL2500-03	AL3000-02	AL3000-03	AL4000-03	AL4000-04	AL4000-06	AL5000-06	AL5000-10

外形尺寸 / Overall Dimension



型号 / Model	口径 / Bore	A	B	C	D	E	F	G	H
AC1000	M5	91	33	25.5	84.5	26	25	25	20
AC2000	G1/8"~G1/4"	140	50	38	125	56.8	30	40	24
AC2500	G1/4"~G3/8"	181	64	38	156.5	60.8	41	53	35
AC3000	G1/4"~G3/8"	181	64	38	156.5	60.8	41	53	35
AC4000	G3/8"~G1/2"	238	84	41	191.5	65.5	50	70	40
AC4000-06	G3/4"	253	89	41	193	69.5	50	70	40
AC5000	G3/4"~G1"	300	105	48	271.5	75.5	69.8	90	50

AC 系列气源处理件 / AC Series air source treatment unit (FR.L)



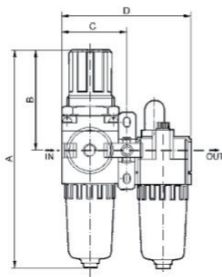
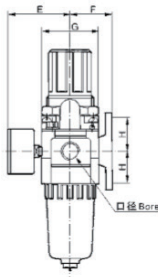
A	C	3010		-	03		D
A 系列 A Series	两联件 FR.L Combination	1010 2010 3010	4010 5010		01 04 02 06 03 10		D: 自动排水 D: Automatic drain

规格 Specification

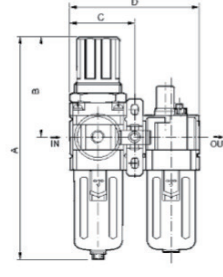
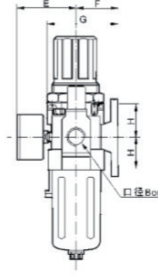
型号 / Model	AC1010-M5	AC2010-01	AC2010-02	AC3010-02	AC3010-03	AC4010-03	AC4010-04	AC4010-06	AC5010-06	AC5010-10	
额定流量 / Rated Flow	90	500	500	1700	1700	3000	3000	3000	4000	4000	
接管口径 / Joint Pipe Bore	M5	G1/8"	G1/4"	G1/4"	G3/8"	G3/8"	G1/2"	G3/4"	G3/4"	G1"	
过滤精度 / Filter Precision	25μm										
最高使用压力 Highest Working Pressure	1.0MPa										
保证耐压力 Ensured Pressure Resistance	1.5MPa										
使用温度范围 Operating Temperature Range	5~60°C										
调节压力范围 Range of Adjustable Pressure	0.05~0.7 MPa		0.05~0.85MPa								
建议用油 Recommended Oil Use	ISO VG 32										
容器材料 / Container Material	聚碳酸酯 / Poly Carbonate										
防护罩 / Protective Cover	无 / Not Available			有 / Available							
放水器功能 / Drain Function	差压放水 / Differential Drain			差压放水、自动放水 / Differential Drain, Automatic Drain							
阀型 / Valve Type	带溢流型 / With Overflow										
构成元件 Composing Elements	过滤调压阀 Filter & Regulator	AW1000-M5	AW2000-01	AW2000-02	AW3000-02	AW3000-03	AF4000-03	AF4000-04	AF4000-06	AF5000-06	AF5000-10
	油雾器 Lubricator	AL1000-M5	AL2000-01	AL2000-02	AL3000-02	AL3000-03	AR4000-03	AR4000-04	AR4000-06	AR5000-06	AR5000-10

外形尺寸 / Overall Dimension

AC1010



AC5010



型号 / Model	口径 / Bore	A	B	C	D	E	F	G	H
AC1010	M5	109.5	50.5	29	58	26	25	25	20
AC2010	G1/8"~G1/4"	164.5	78	45	90	56.8	30	40	24
AC3010	G1/4"~G3/8"	211	92.5	58.5	117	60.8	41	53	35
AC4010	G3/8"~G1/2"	262	112	77	154	70.5	41	70	40
AC4010-06	G3/4"	267	114	82	164	70.5	50	70	40
AC5010	G3/4"~G1"	338	116	97.5	195	75.5	69.8	90	50

AW 系列气源处理件 / AW Series air filter regulator

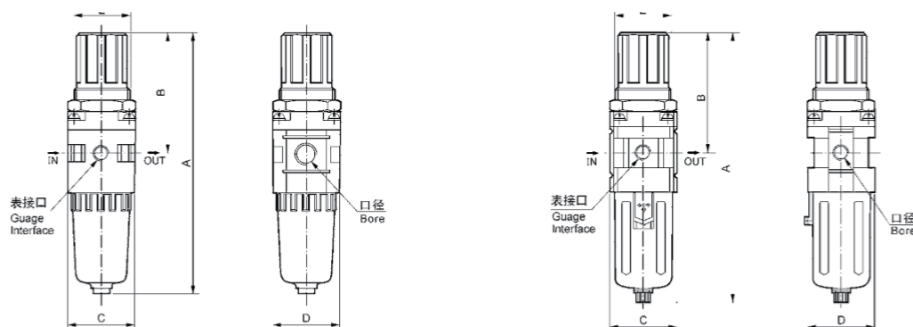


A	W	3000	-	03	D
A 系列 A Series	过滤 + 调压阀 Filter+Regulator	1000 4000 2000 5000 3000		01 04 02 06 03 10	D: 自动排水 D:Automatic drain

规格 Specification

型号 / Model	AW1000-M5	AW2000-01	AW2000-02	AW3000-02	AC3000-03	AC4000-03	AC4000-04	AC4000-06	AC5000-06	AC5000-10
额定流量 / Rated Flow	100	550	550	2000	2000	3000	4000	4500	5500	5000
接管口径 / Joint Pipe Bore	M5	G1/8"	G1/4"	G1/4"	G3/8"	G3/8"	G1/2"	G3/4"	G3/4"	G1"
过滤精度 / Filter Precision	25μm									
最高使用压力 Highest Working Pressure	1.0MPa									
保证耐压力 Ensured Pressure Resistance	1.5MPa									
使用温度范围 Operating Temperature Range	5~60°C									
调节压力范围 Range of Adjustable Pressure	0.05~0.7 MPa	0.05~0.85MPa								
容器材料 / Container Material	聚碳酸酯 / Poly Carbonate									
防护罩 / Protective Cover	无 / Not Available				有 / Available					
放水器功能 / Drain Function	差压放水 / Differential Drain				差压放水、自动放水 / Differential Drain, Automatic Drain					
阀型 / Valve Type	带溢流型 / With Overflow									

外形尺寸 / Overall Dimension



型号 / Model	口径 / Bore	A	B	C	D	E
AW1000	M5	109.5	50.5	25	28	28
AW2000	G1/8"~G1/4"	164.5	78	40	40	34
AW3000	G1/4"~G3/8"	211	92.5	53	53	40
AW4000	G3/8"~G1/2"	262	112	70	70	54
AW4000-06	G3/4"	267	114	70	70	54
AW5000	G3/4"~G1"	338	116	90	90	54

AR 系列调压阀 /AR Series regulator

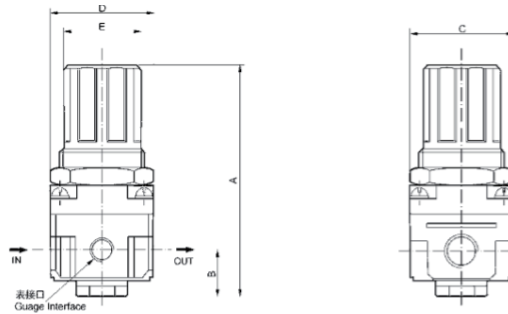


A	R	3000		-	03	
A 系列 A Series	调压阀 Regulator	1000 2000 3000	4000 5000		01 02 03	04 06 10

规格 Specification

型号 /Model	AR1000-M5	AR2000-01	AR2000-02	AR2500-02	AR2500-03	AR3000-02	AC3000-03	AC4000-03	AC4000-04	AC4000-06	AC5000-06	AC5000-10
额定流量 /Rated Flow	100	550	550	2000	2000	2500	4000	4500	600	6000	8000	8000
接管口径 /Joint Pipe Bore	M5	G1/8"	G1/4"	G1/4"	G3/8"	G1/4"	G3/8"	G3/8"	G1/2"	G3/4"	G3/4"	G1"
最高使用压力 Highest Working Pressure	1.0MPa											
保证耐压力 Ensured Pressure Resistance	1.5MPa											
使用温度范围 Operating Temperature Range	5~60°C											
调节压力范围 Range of Adjustable Pressure	0.05~0.7 MPa	0.05~0.85MPa										
阀型 /Valve Type	带溢流型 /With Overflow											

外形尺寸 /Overall Dimension



型号 /Model	口径 /Bore	A	B	C	D	E
AR1000	M5	61.5	11	25	25	28
AR2000	G1/8"~G1/4"	95	17	40	40	34
AR2500	G1/4"~G3/8"	102.5	25	48	53	34
AR3000	G1/4"~G3/8"	127.5	35	53	53	40
AR4000	G3/8"~G1/2"	149.5	37.5	70	70	54
AR4000-06	G3/4"	154	40.5	70	75	54
AR5000	G3/4"~G1"	168	48	90	90	54

AF 系列空气过滤器 /AF Series air filter

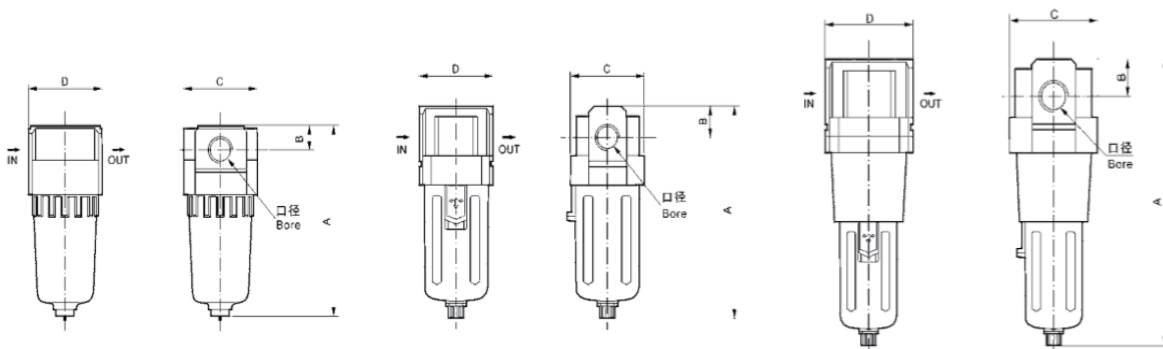


A	F	3000	-	03	D
A 系列 A Series	过滤器 Regulator	1000 2000 3000	4000 5000	01 04 02 06 03 10	D: 自动排水 D:Automatic drain

规格 Specification

型号 /Model	AF1000-M5	AF2000-01	AF2000-02	AF3000-02	AF3000-03	AF4000-03	AF4000-04	AF4000-06	AF5000-06	AF5000-10
额定流量 /Rated Flow	100	750	750	1500	1500	4000	4000	6000	7000	7000
接管口径 /Joint Pipe Bore	M5	G1/8"	G1/4"	G1/4"	G3/8"	G3/8"	G1/2"	G3/4"	G3/4"	G1"
过滤精度 /Filter Precision	25μm									
最高使用压力 Highest Working Pressure	1.0MPa									
保证耐压力 Ensured Pressure Resistance	1.5MPa									
使用温度范围 Operating Temperature Range	5~60°C									
容器材料 /Container Material	聚碳酸酯 /Poly Carbonate									
防护罩 /Protective Cover	无 /Not Available					有 /Available				
放水器功能 /Drain Function	差压放水 /Differential Drain					差压放水、自动放水 /Differential Drain, Automatic Drain				

外形尺寸 /Overall Dimension



型号 /Model	口径 /Bore	A	B	C	D
AF1000	M5	66	7	25	-
AF2000	G1/8"~G1/4"	97.5	11	40	40
AF3000	G1/4"~G3/8"	132.5	14	53	53
AF4000	G3/8"~G1/2"	168.5	18	70	70
AF4000-06	G3/4"	172.5	20	70	70
AF5000	G3/4"~G1"	247.5	24	90	90

AL 系列油雾器 / AL Series lubricator

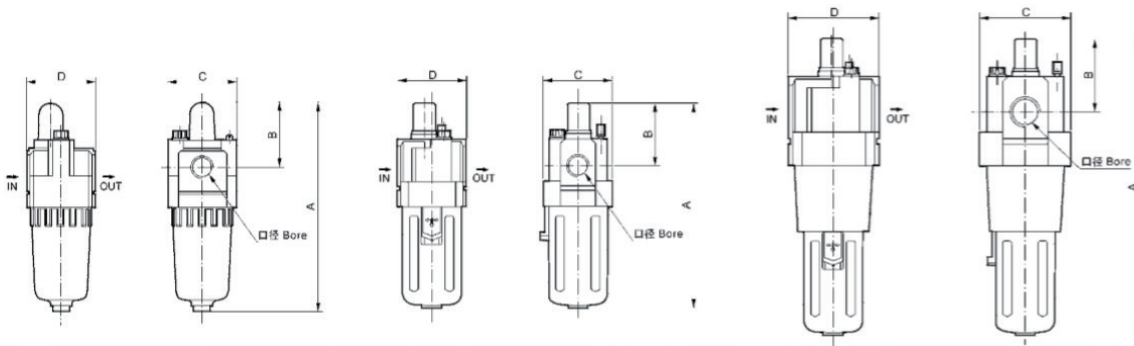


A	L	3000		-	03	
A 系列 A Series	油雾器 Lubricator	1000 2000 3000	4000 5000		01 02 03	04 06 10

规格 Specification

型号 / Model	AL1000-M5	AL2000-01	AL2000-02	AL3000-02	AL3000-03	AL4000-03	AL4000-04	AL4000-06	AL5000-06	AL5000-10
额定流量 / Rated Flow	95	800	800	1700	1700	5000	5000	6300	7000	7000
接管口径 / Joint Pipe Bore	M5	G1/8"	G1/4"	G1/4"	G3/8"	G3/8"	G1/2"	G3/4"	G3/4"	G1"
最高使用压力 Highest Working Pressure	1.0MPa									
保证耐压力 Ensured Pressure Resistance	1.5MPa									
使用温度范围 Operating Temperature Range	5~60°C									
建议用油 Recommended Oil Use	ISO VG 32									
容器材料 / Container Material	聚碳酸酯 / Poly Carbonate									
防护罩 / Protective Cover	无 / Not Available					有 / Available				

外形尺寸 / Overall Dimension



型号 / Model	口径 / Bore	A	B	C	D
AL1000	M5	81.5	25.5	25	-
AL2000	G1/8"~G1/4"	122	38	40	40
AL3000	G1/4"~G3/8"	142	38	53	53
AL4000	G3/8"~G1/2"	177	41	70	70
AL4000-06	G3/4"	177	39	70	70
AL5000	G3/4"~G1"	254	45	90	90

AC,BC 系列气源处理件 / AC,BC Series air source treatment unit



BC	3000	-	D
----	------	---	---

AC: 小型 / Small size 1500:G1/8 3000:G3/8 D: 自动排水
 BC: 中型 / Middle size 2000:G1/4 4000:G1/2 D: Automatic drain

型号 / Model	AC1500	AC2000	BC2000	BC3000	BC4000
接管口径 / Prot size	G1/8	G1/4	G1/4	G3/8	G1/2

AFC,BFC 系列气源处理件 / AFC,BFC Series air source treatment unit



BFC	3000	-	D
-----	------	---	---

AFC: 小型 / Small size 1500:G1/8 3000:G3/8 D: 自动排水
 BFC: 中型 / Middle size 2000:G1/4 4000:G1/2 D: Automatic drain

型号 / Model	AFC1500	AFC2000	BFC2000	BFC3000	BFC4000
接管口径 / Prot size	G1/8	G1/4	G1/4	G3/8	G1/2

AFR,BFR 系列气源处理件 / AFR,BFR Series air source treatment unit



BFR	3000	-	D
-----	------	---	---

AFR: 小型 / Small size 1500:G1/8 3000:G3/8 D: 自动排水
 BFR: 中型 / Middle size 2000:G1/4 4000:G1/2 D: Automatic drain

型号 / Model	AFR1500	AFR2000	BFR2000	BFR3000	BFR4000
接管口径 / Prot size	G1/8	G1/4	G1/4	G3/8	G1/2

AF,BF 系列空气过滤器 / AF,BF Series air filter



AF	3000	-	D
----	------	---	---

AF: 小型 / Small size 1500:G1/8 3000:G3/8 D: 自动排水
 BF: 中型 / Middle size 2000:G1/4 4000:G1/2 D: Automatic drain

型号 / Model	AF1500	AF2000	BF2000	BF3000	BF4000
接管口径 / Prot size	G1/8	G1/4	G1/4	G3/8	G1/2

AL,BL 系列油雾器 / AL,BL Series lubricator



BL	3000
----	------

AL: 小型 / Small size 1500:G1/8 3000:G3/8
 BL: 中型 / Middle size 2000:G1/4 4000:G1/2

型号 / Model	AL1500	AL2000	BL2000	BL3000	BL4000
接管口径 / Prot size	G1/8	G1/4	G1/4	G3/8	G1/2

AR,BR 系列调压阀 / AR,BR Series regulator



AR	3000
----	------

AR: 小型 / Small size 1500:G1/8 3000:G3/8
 BR: 中型 / Middle size 2000:G1/4 4000:G1/2

型号 / Model	AR1500	AR2000	BR2000	BR3000	BR4000
接管口径 / Prot size	G1/8	G1/4	G1/4	G3/8	G1/2

SFC 系列气源处理件 /SFC Series air source treatment unit



SFC: 系列气源处理件
SFC :Series air source treatment unit

200
300
400

型号 /Model	SFC200	SFC300	SFC400
接管口径 /Port size	G1/4	G3/8	G1/2

AD402 自动排水器 /AD402 Auto drain

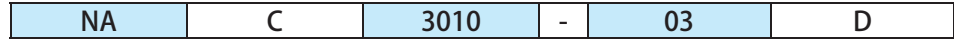


AD402: 系列 / 自动排水器
AD402:Series auto drain

02
03
04

型号 /Model	AD402-02	AD402-03	AD402-04
接管口径 /Port size	G1/4	G3/8	G1/2

NA 系列气源处理件 /NA Series air source treatment unit



NA 系列
NA Series

两联件
F.R.L Combination

2010
3010
4010

02
03
04

D: 自动排水
D:Automatic drain

型号 /Model	NAC2010-02	NAC3010-02	NAC3010-03	NAC4010-03	NAC4010-04
接管口径 /Port size	G1/4	G1/4	G3/8	G3/8	G1/2

EFRH 系列空气过滤器 + 调压阀 /EFRH Series high pressure air filter+regulator

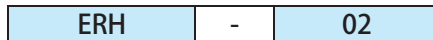


EFRH 系列
EFRH Series

02 03
04 06
10

型号 /Model	EFRH02	EFRH-03	EFRH-04	EFRH-06	EFRH-10
接管口径 /Port size	G1/4	G3/8	G1/2	G3/4	G1

ERH 系列调压阀 /ERH Series high pressure regulator

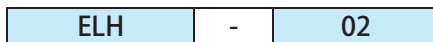


ERH 系列
ERH Series

02 03
04 06
10

型号 /Model	ERH02	ERH-03	ERH-04	ERH-06	ERH-10
接管口径 /Port size	G1/4	G3/8	G1/2	G3/4	G1

ELH 系列空气过滤器 /ELH Series high pressure air filter



ELH 系列
ELH Series

02 03
04 06
10

型号 /Model	ELH02	ELH-03	ELH-04	ELH-06	ELH-10
接管口径 /Port size	G1/4	G3/8	G1/2	G3/4	G1

不锈钢迷你型二点式三点式总合 /Stainless steel mini F.R.L combination



特色

- 1、sus316 不锈钢材质、耐高压、耐腐蚀、耐酸碱。
- 2、适用户外及有酸碱环境（不排气型）。
- 3、适用半导体工业。
- 4、有效快速排除水及微粒。
- 5、压力调整敏感精准。
- 6、不用关掉气源及不用停线加油。
- 7、细雾状给油供应有效保护并延长机件寿命。
- 8、轻量化，小型化，减少安装空间。
- 9、耐高压

Features:

1. For high pressure use; corrosion and chemical resistance.
2. Good performance for outdoor facility.
3. Suitable for semi-conductor industry.
4. The product effectively removes water and particle.
5. Accurate and sensitive pressure setting.
6. Lubricator oil can be replenished without stopping air supply.
7. Oil spray in mist ensures good lubrication for machines.
8. Light weight, compact size for space saving.
9. High pressure resistant.

订购码 /Ordering Code

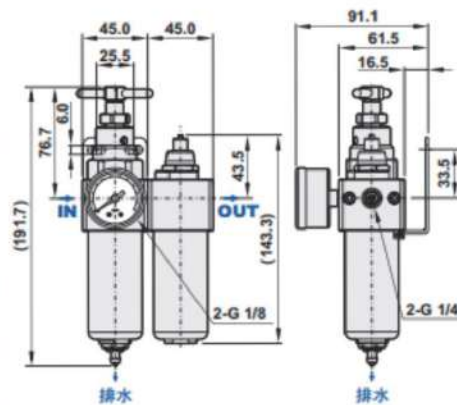
SSERL600	-	02	N	C	H
----------	---	----	---	---	---

型号 /Model	
不锈钢迷你型二点式三点组合 Miniature Filter Regulator+Lubricator	
配管尺寸 /Port size	
02:1/4"	
配管口螺牙 /Thread	
空白 /Blank:	G
N:	NPT
R:	RC
过滤精度 /Filtration	
PE 滤芯 /Filtration	
空白 /Blank:	5µm
C:	40µm
排水方式 /Drain	
空白 /Blank:	半自动排水 /Semi-auto drain
H:	手动排水 /Manual drain

规格表 /Specifications

型号 /Model	SSERL600
配管尺寸 /Port size	1/4"
使用流体 /Fluid	压缩空气 /Compressed air
调压结构 /Regulator construction	活塞式 /Piston
本体材质 /Body material	不锈钢 sus316 /Stainless steel SUS316
杯子材质 /Bowl material	不锈钢 sus316/Stainless steel SUS316
压力表材质 Pressure gauge material	外壳不锈钢 sus304、牙口不锈钢 sus316、 Case:Stainless steel SUS304, Thread:Stainless steel SUS316,
滤芯材质 /Filter element material	不锈钢 sus316/Stainless steel SUS316
过滤精度 /Filtration	5µm (标准配备) 40µm (选购) 5µm (Standard) 40µm (Option)
操作压力 /Operating pressure range	0~20kgf/cm ²
最大进气压 /Proof pressure	30kgf/cm ²
最大流量 /Max. flow rate/1min(ANR)	1850 l/min
环境温度 /Ambient temperature	-10°C~60°C
滤杯容量 /Lubricator bowl capacity	105cc
油杯容量 /Filter bowl capacity	125cc
标准排水 Lubricator bowl capacity	半自动 (需低于 0.5kgf/cm ² 泄水) Semi-auto drain (Drains below 0.50.5kgf/cm ²)
净重 /Standard drain	2660g
附属配件 Net weight	压力表 (0~10kg)、塞头、固定架组 Pressure gauge, Mounting bracket, Plug, Screw x 2
选购配件 /Accessories	压力表 (0~20kg)

外形图纸 /Dimensions



不锈钢迷你型调压过滤器 /Stainless steel mini filter regulator



特色

- 1、sus316 不锈钢材质、耐高压、耐腐蚀、耐酸碱。
- 2、适用于户外及有酸碱环境（不排气型）。
- 3、适用半导体工业。
- 4、流量大并有效快速排除水及微粒。
- 5、压力调整敏感精准。
- 6、轻量化，小型化，减少安装空间。
- 7、耐高压

Features:

- 1.For high pressure use; corrosion and chemical resistance.
- 2.Good performance in chemically working environments and outdoor facility.
- 3.Suitable for semi-conductor industry.
- 4.Large flow rate and effectively removes water and particle.
- 5.Accurate and sensitive pressure setting.
- 6.Light weight; compact size for space saving.
- 7.High pressure resistant.

订购码 /Ordering Code

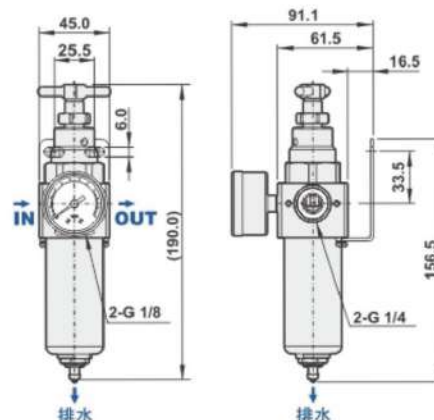
SSFR200	-	02	N	C	H
---------	---	----	---	---	---

型号 /Model	
不锈钢迷你型调压过滤器 Miniature Filter Regulator	
配管尺寸 /Port size	
02:1/4"	
配管口螺牙 /Thread	
空白 /Blank:	G
N:	NPT
R:	RC
过滤精度 /Filtration	
PE 滤芯 /Filtration	
空白 /Blank:	5μm
C:	40μm
排水方式 /Drain	
空白 /Blank:	半自动排水 /Semi-auto drain
H:	手动排水 /Manual drain

规格表 /Specifications

型号 /Model	SSFR200
配管尺寸 /Port size	1/4"
使用流体 /Fluid	压缩空气 /Compressed air
调压结构 /Regulator construction	活塞式 /Piston
本体材质 /Body material	不锈钢 sus316 /Stainless steel SUS316
杯子材质 /Bowl material	不锈钢 sus316 /Stainless steel SUS316
压力表材质 /Pressure gauge material	外壳不锈钢 sus304、牙口不锈钢 sus316、Thread:Stainless steel SUS316
滤芯材质 /Filter element material	不锈钢 sus316 /Stainless steel SUS316
过滤精度 /Filtration	5μm (标准配备) 40μm (选购) 5μm (Standard) 40μm (Option)
操作压力 /Operating pressure range	0~20kgf/cm ²
最大进气压 /Proof pressure	30kgf/cm ²
最大流量 /Max flow rate /1/min(ANR)	1850 1/min
环境温度 /Ambient temperature	-10°C~60°C
滤杯容量 /Lubricator bowl capacity	105cc
标准排水 /Lubricator bowl capacity	半自动 (需低于 0.5kgf/cm ² 泄水) Semi-auto drain (Drains below 0.5kgf/cm ²)
净重 /Standard drain	1380g
附属配件 /Net weight	压力表 (0~10kg)、塞头、固定架组 Pressure gauge, Mounting bracket, Plug, Screw x 2
选购配件 /Accessories	压力表 (0~20kg)

外形图纸 /Dimensions



不锈钢迷你型油雾器 /Stainless steel mini lubricator



特色

- 1、sus316 不锈钢材质、耐高压、耐腐蚀、耐酸碱。
- 2、适用户外及有酸碱环境。
- 3、适用半导体工业。
- 4、不用关掉气源及不用停线加油。
- 5、细雾状给油供应有效保护并延长机件寿命。
- 6、轻量化，小型化，减少安装空间。
- 7、耐高压

Features:

- 1.For high pressure use; corrosion and chemical resistance.
- 2.Good performance in chemically working environments and outdoor facility.
- 3.Suitable for semi-conductor industry.
- 4.Lubricator oil can be replenished without stopping air supply.
- 5.Oil spray in mist ensures good lubrication for machines.
- 6.Light weight; compact size for space saving.
- 7.High pressure resistant.

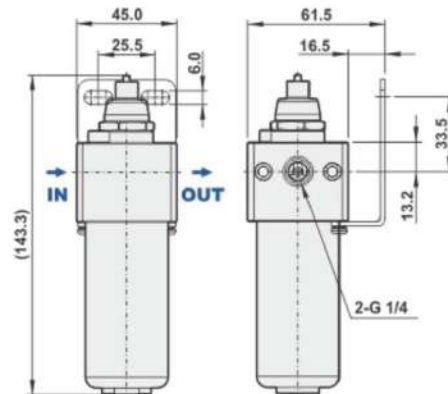
订购码 /Ordering Code

型号 /Model	SSL200	-	02	N
不锈钢迷你型油雾器 Miniature lubricator				
配管尺寸 /Port size				
02:1/4"				
配管口螺牙 /Thread				
空白 /Blank:	G			
N:	NPT			
R:	RC			

规格表 /Specifications

型号 /Model	SSL200
配管尺寸 /Port size	1/4"
使用流体 /Fluid	压缩空气 /Compressed air
本体材质 /Body material	不锈钢 sus316 /Stainless steel SUS316
杯子材质 /Bowl material	不锈钢 sus316 /Stainless steel SUS316
操作压力 /Operating pressure range	0~20kgf/cm ²
最大进气压 /Proof pressure	30kgf/cm ²
最大流量 /Max.flow rate/1/min(ANR)	2500 1/min
环境温度 /Ambient temperature	-10°C~60°C
油杯容量 /Filter bowl capacity	125cc
净重 /Net weight	1200g
附属配件 /Accessories(Optional)	固定架组 /Mounting bracket,Screw x 2

外形图纸 /Dimensions



不锈钢迷你型过滤器 /Stainless steel mini filter



特色

- 1、sus316 不锈钢材质、耐高压、耐腐蚀、耐酸碱。
- 2、适用于户外及有酸碱环境。
- 3、适用半导体工业。
- 4、有效快速排除水及微粒。
- 5、品质严格管制。
- 6、轻量化，小型化，减少安装空间。
- 7、耐高压

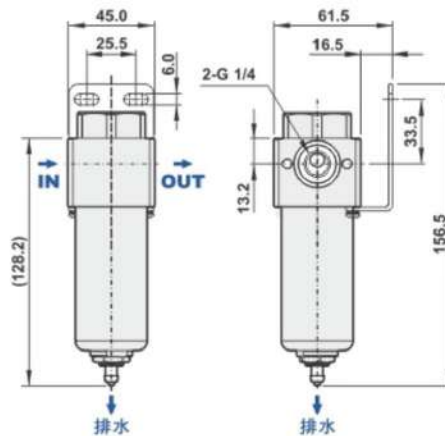
Features:

- 1.For high pressure use; corrosion and chemical resistance.
- 2.Good performance in chemically working environments and outdoor facility.
- 3.Suitable for semi-conductor industry.
- 4.Effectively removes water and particle.
- 5.Strict quality control.
- 6.Light weight; compact size for space saving.
- 7.High pressure resistant.

订购码 /Ordering Code

型号 /Model	SSF200	-	02	N	C	H
不锈钢迷你型过滤器 Miniature Filter						
配管尺寸 /Port size	02:1/4"					
配管口螺牙 /Thread						
空白 /Blank: :	G					
N:	NPT					
R:	RC					
过滤精度 /Filtration						
PE 滤芯 /Filtration						
空白 /Blank: :	5µm					
C:	40µm					
排水方式 /Drain						
空白 /Blank:	半自动排水 /Semi-auto drain					
H:	手动排水 /Manual drain					

外形图纸 /Dimensions



规格表 /Specifications

型号	SSFR500
配管尺寸 /Port size	1/4"
使用流体 /Fluid	压缩空气
本体材质 /Body material	不锈钢 sus316
杯子材质 /Bowl material	不锈钢 sus316
滤芯材质 /Filter element material	不锈钢 sus316
过滤精度 Filtration	5µm (标准配备) 40µm (选购) 5µm (Standard) 40µm (Option)
操作压力 /Operating pressure range	0~20kgf/cm ²
最大进气压 /Proof pressure	30kgf/cm ²
最大流量 /1/min(ANR)	1900 1/min
环境温度 /Ambient temperature	-10°C~60°C
滤杯容量 /Filter bowl capacity	105cc
标准排水 Standard drain	半自动 (需低于 0.5kgf/cm ² 泄水) Semi-auto drain (Drains below 0.5kgf/cm ²)
净重 /Net weight	1260g
附属配件 /Accessories(Optional)	压力表 (0~10kg)、塞头、固定架组 Mounting bracket, Screw x 2

不锈钢迷你型调压关 /Stainless steel mini regulator



特色

- 1、sus316 不锈钢材质、耐高压、耐腐蚀、耐酸碱。
- 2、适用于户外及有酸碱环境（不排气型）。
- 3、适用半导体工业。
- 4、流量大并有效快速排除水及微粒。
- 5、压力调整敏感精准。
- 6、轻量化，小型化，减少安装空间。
- 7、耐高压

Features:

- 1.For high pressure use; corrosion and chemical resistance.
- 2.Good performance for outdoor facility.
- 3.Suitable for semi-conductor industry.
- 4.Large flow rate and effectively removes water and particle.
- 5.Accurate and sensitive pressure setting.
- 6.Light weight; compact size for space saving.
- 7.High pressure resistant.

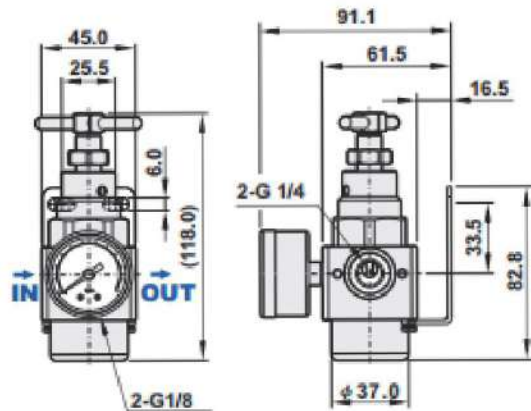
订购码 /Ordering Code

型号 /Model	SSR200	-	02	N
不锈钢迷你型调压关 Miniature Regulator				
配管尺寸 /Port size	02:1/4"			
配管口螺牙 /Thread				
空白 /Blank:	G			
N:	NPT			
R:	RC			

外形图纸 /Dimensions

规格表 /Specifications

型号 /Model	SSR200
配管尺寸 /Port size	1/4"
使用流体 /Fluid	压缩空气 /Compressed air
调压结构 /Regulator construction	活塞式 /Piston
本体材质 /Body material	不锈钢 sus316 /Stainless steel SUS316
压力表材质 Pressure gauge material	外壳不锈钢 sus304、牙口不锈钢 sus316、 Case:Stainless steel SUS304, Thread:Stainless steel SUS316,
操作压力 /Operating pressure range	0~20kgf/cm ²
最大进气压 /Proof pressure	30kgf/cm ²
最大流量 /Max.flow rate/1min(ANR)	1850 1/min
环境温度 /Ambient temperature	-10°C~60°C
净重 /Net weight	1200g
附属配件 /Accessories(Optional)	压力表 (0~10kg)、塞头、固定架组 Pressure gauge,Mounting bracket,Plug, Screw x 2
选配 /Match	压力表 (0~20kg)



QTYH 高压减压阀 /QTYH High Pressure Regulator



订购码 /Ordering Code

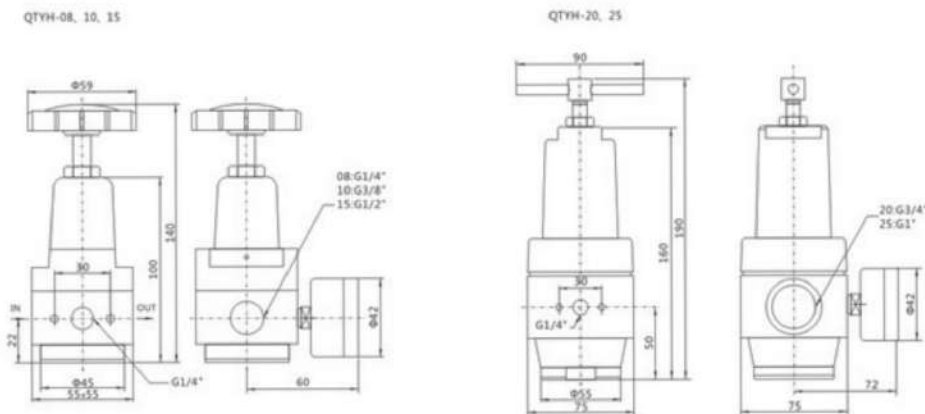
QTYH		15	
------	--	----	--

型号 /Model
高压减压阀/High Pressure Regulator

接管口径 /Port Size	
08	G1/4"
10	G3/8"
15	G1/2"
20	G3/4"
25	G1"

规格 /Specification					
型号 /Model	QTYH 08	QTYH 10	QTYH 15	QTYH 20	QTYH 25
使用流体 /Operating Fluid	空气				
接管口径 /Port Size	G1/4"	G3/8"	G1/2"	G3/4"	G1"
调节压力范围 Range of Adjustable Pressure	0.05~3.5MPa				
最大输入压力 Max. Input Pressure	4MPa				
使用温度范围 Operating Temperature Range	-25~80°C				

外形尺寸图 /Dimensions



迷你型调压阀 /Mini regulator



特色

- 1、膜片式压力调整更敏感、精准。
- 2、可盘面固定。

Features:

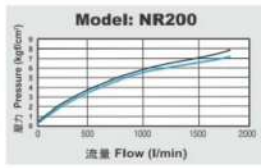
- 1.Diaphragm design provides more accurate and easier pressure setting.
- 2.Panel mounting is available.

订购码 /Ordering Code

NR200	-	02	N	B	G																																		
<table border="1"> <tr> <th colspan="2">迷你型调压阀 /Mini regulator</th> </tr> <tr> <td>NR200:</td> <td>0.5~8kgf/cm²</td> </tr> <tr> <td>NR200L4:</td> <td>0.5~4kgf/cm²</td> </tr> <tr> <td>NR200L2:</td> <td>0.5~2kgf/cm²</td> </tr> <tr> <th colspan="2">配管尺寸 /Port size</th> </tr> <tr> <td>01:</td> <td>1/8"</td> </tr> <tr> <td>02:</td> <td>1/4"</td> </tr> <tr> <th colspan="2">配管口螺纹 /Thread</th> </tr> <tr> <td>空白 /Blank:</td> <td>G</td> </tr> <tr> <td>N:</td> <td>NPT</td> </tr> <tr> <td>R:</td> <td>RC</td> </tr> <tr> <th colspan="2">固定架 /Mounting Bracket</th> </tr> <tr> <td>空白 /Blank:</td> <td>不附架 /W/O bracket</td> </tr> <tr> <td>B:</td> <td>附架 W/I bracket</td> </tr> <tr> <th colspan="2">压力表 /Pressure gauge</th> </tr> <tr> <td>空白 /Blank:</td> <td>不含压力表 W/O gauge</td> </tr> <tr> <td>G:</td> <td>含压力表 W/I gauge</td> </tr> </table>						迷你型调压阀 /Mini regulator		NR200:	0.5~8kgf/cm ²	NR200L4:	0.5~4kgf/cm ²	NR200L2:	0.5~2kgf/cm ²	配管尺寸 /Port size		01:	1/8"	02:	1/4"	配管口螺纹 /Thread		空白 /Blank:	G	N:	NPT	R:	RC	固定架 /Mounting Bracket		空白 /Blank:	不附架 /W/O bracket	B:	附架 W/I bracket	压力表 /Pressure gauge		空白 /Blank:	不含压力表 W/O gauge	G:	含压力表 W/I gauge
迷你型调压阀 /Mini regulator																																							
NR200:	0.5~8kgf/cm ²																																						
NR200L4:	0.5~4kgf/cm ²																																						
NR200L2:	0.5~2kgf/cm ²																																						
配管尺寸 /Port size																																							
01:	1/8"																																						
02:	1/4"																																						
配管口螺纹 /Thread																																							
空白 /Blank:	G																																						
N:	NPT																																						
R:	RC																																						
固定架 /Mounting Bracket																																							
空白 /Blank:	不附架 /W/O bracket																																						
B:	附架 W/I bracket																																						
压力表 /Pressure gauge																																							
空白 /Blank:	不含压力表 W/O gauge																																						
G:	含压力表 W/I gauge																																						

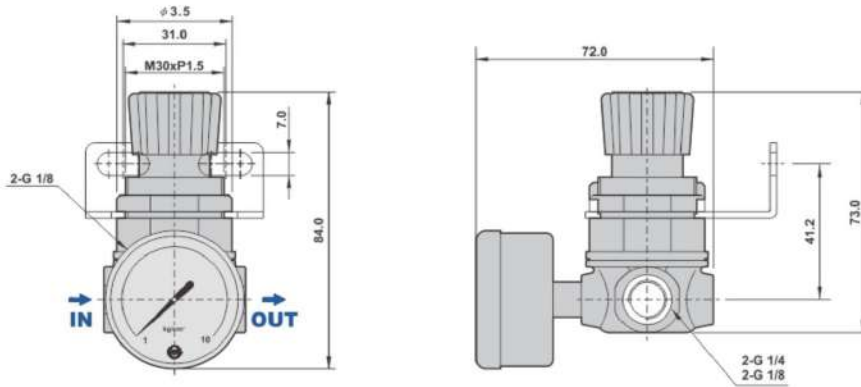
型号 /Model	NR200	NR200L4	NR200L2
配管尺寸 /Port size		1/8", 1/4"	
使用流体 /Fluid		压缩空气 /Compressed air	
调压结构 /Regulator construction		膜片式铝 /Diaphragm	
本体材质 /Body material		合金 /Aluminum die-cast	
操作压力 /Operating pressure range	0.5~8kgf/cm ²	0.5~4kgf/cm ²	0.5~2kgf/cm ²
最大进气压 /Proof pressure		12kgf/cm ²	
最大流量 /Max.flow rate/ 1/min(ANR)		1500	
环境温度 /Ambient temperature		-10°C~60°C	
上盖板颜色 /Color of knob plate	蓝色 /Blue	橙色 /Orange	黄色 /Yellow
净重 /Net weight		205g	
附属配件 /Accessories		塞头 /Plug	
选购配件 /Match accessories		压力表、固定架 /Gauge, brackets	

流量表 /Flow chart

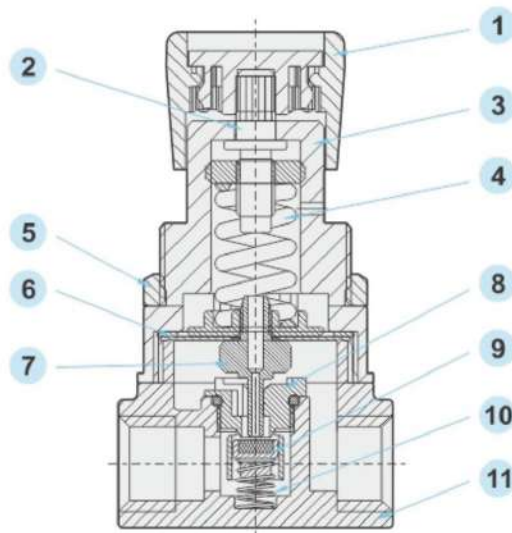


说 Note:	
X 轴 /X axis:	流量 /Flow(l/min)
Y 轴 /Y axis:	压力 /Pressure (kg/cm ²)
蓝线 (P0)/Blue line (P0)=	出气孔压力 /Outlet pressure
黑线 (P1)/Black line(P1)=	出气口压力 /Inlet pressure
P1-P0=	压力范围 /P1-P0=Pressure range

外形尺寸图 /Dimensions



内部结构图 /Construction



编号 /No	名称 /Description	材质 /Material
1	调压手环 /Regulator knob	NY
2	压力调整螺丝 /Pressure regulating screw	Fe+Ni
3	调压座 /Regulator base	NY+GF
4	弹簧 /Spring	琴线 /Spring steel
5	固定架压环 /Lock nut	NY+GF
6	膜片 /Diaphragm	NBR70
7	调压杆针 /Regulating needle	AL
8	杆针定位螺帽 /Positioning nut	POM
9	内塞头 /Plug	Cu
10	弹簧 /Spring	Sus
11	本体 /Body	ADC12