

# CV22CT6 直动式隔爆电磁阀

## CV22CT6 Directing Ex-proof Solenoid valve



### IP66 ExdIICT6 DIPA20 TA, T6

直动式隔爆电磁阀, CV22CT6 隔爆电磁阀可以在零压力的情况下正常开关, 流量通径可在 0.8~3.0mm 可选, 材质可选铝合金或不锈钢 316L 材质, 适用于高等级的防爆性能特别适用于石化、海洋平台等高腐蚀、高防爆环境中使用。  
Directing Ex-proof Solenoid valve. CV22CT6 Ex-proof valve can be working at 0 pressure. Orifice size is : 0.8~3.0 for optional. Material can be Aluminum and Stainless stell 316L material. Widely use for high class and high corrosion and explosion proof environment like OIL/GAS/SEA and FOOD and Medical industry.

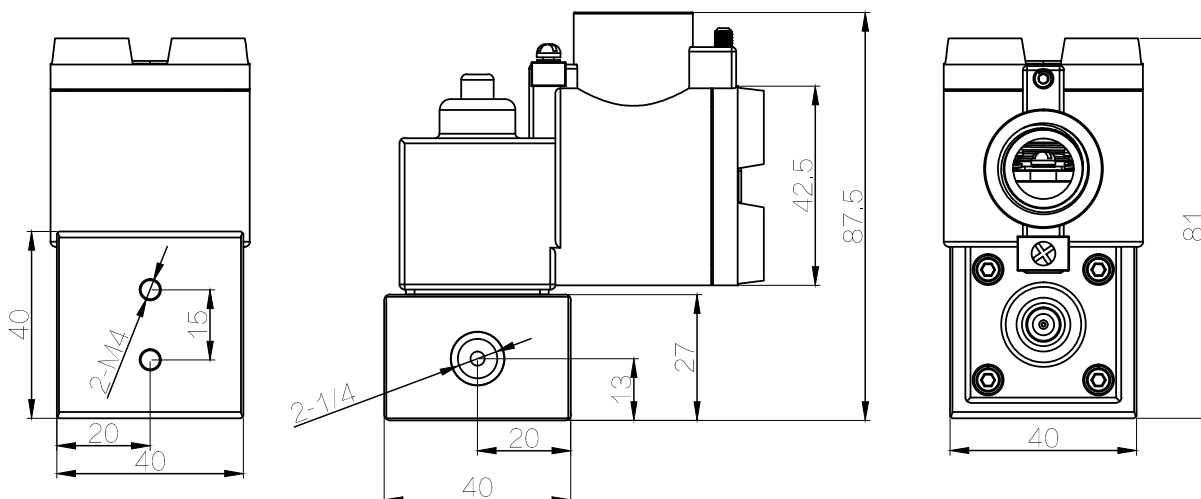
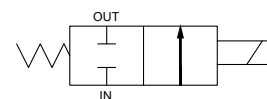
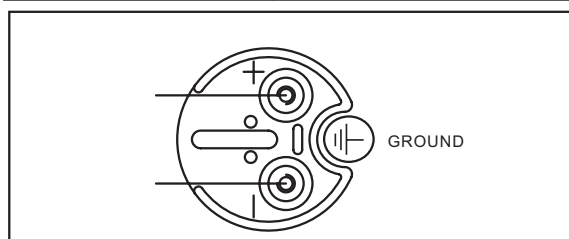
CV22CT6 为铝合金材质  
CV22CT6=Aluminum Material

SV22CT6 为不锈钢材质  
SV22CT6=SS316 Material

技术规格和参数 / Specification	
阀体材料 / Body Material	铝或不锈钢 / Extruded aluminum or SS 316L
外表处理 / Finishing	氧化或电解抛光 / electrochemical polishing
密封 / Seal	丁晴橡胶 "O" 形圈 NBR
介质接触材料 Material in contact with fluid	铝或不锈钢 316, 丁晴橡胶 Extruded aluminum POM SS316. NBR,POM
阀体功能及 CV 值 Function and CV value	CV=0.3(3mm) CV=0.12(1.5mm)
气源接口 / Port size	G1/4"BSPP 或 NPT1/4 G1/4"BSPP or NPT1/4
安装标准 / Mount standard	自由安装 / Free connection
紧固螺钉 / Fix screws	不锈钢 / Stainless steel
防护等级 / Protection class	IP65/NEMA4,4X
防爆等级 / Ex-proof class	无 / NO
工作温度 / Working temperature	-10°C~80°C
工作压力 / Working pressure	0~10 bar
工作介质 / Working medium	空气, 水, 油 / Air,Water,Oil
工作寿命 / Life cycles	1000 万次以上 (正常工作条件) 10 millions

▶ 别的流量通径或电压可定做 / Other orifice and voltage can make to order

电磁线圈 / Solenoid Specification	
工作电源 / Voltage	24VDC-2.5~6.5W (50/60HZ) 110/220VAC-4~6VA
线圈外壳 / Coil cover	铝或不锈钢 316 Stainless steel 316
电缆接口 / Cable plug	M20*1.5 1/2"BSPP 或 NPT M20*1.5 1/2"BSPP or NPT
绝缘等级 / Insulation grade	H Class Coil
抗电强度 / Dielectric strength	1000V
负载周期 / Duty cycles	100%ED
防护等级 / Protection class	IP66
防爆等级 / Ex-proof class	ExdIICT6 DIPA20 TA,T6
工作温度 / Working temperature	-30°C~120°C



# SSW561T6 不锈钢隔爆电磁阀

## SSW561T6 Stainless steel flameproof type solenoid valves



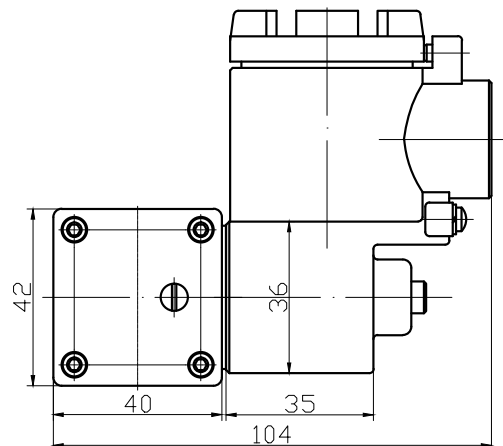
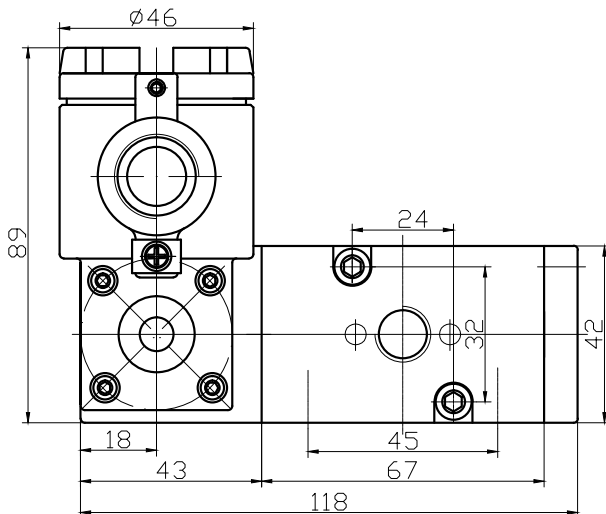
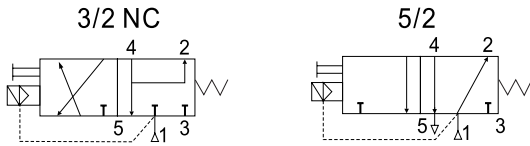
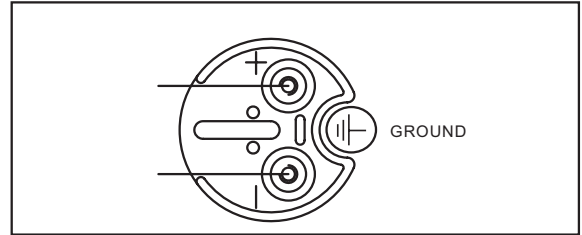
IP66 ExdIICT6 DIPA20 TA, T6

依据 NAMUR 国际标准, SSW 不锈钢 316L 隔爆电磁阀包含了 NAMUR 板接式、管接式、2/3、2/5 四种功能, 可直接控制单作用和双作用气动执行器, 并且配置了安全可靠的手动装置, 是一款真正的不锈钢 316L 隔爆电磁阀。由于其特有的不锈钢 316L 阀体、高等级的防爆性能特别适用于石化、海洋平台等高腐蚀、高防爆环境中使用。

NAMUR Standard. SSW Stainless steel 316L.ex-proof contains Namur and pipe connection.3/2 and 5/2 functions. Can control the single and double acting actuators. It come with reliable manual override. Widely use in any corrosion condition.

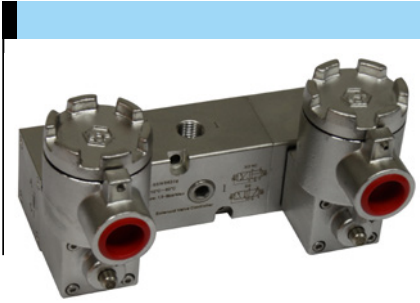
技术规格和参数 / Specification	
阀体材料 / Body Material	不锈钢 /316L SS 316L
外表处理 / Finishing	电解抛光 / electrochemical polishing
密封 / Seal	丁晴橡胶 "O" 形圈 NBR
介质接触材料 Material in contact with fluid	不锈钢 316, 丁晴橡胶 POM SS316. NBR,POM
阀体功能及 CV 值 Function and CV value	5/2 及 3/2 NC,CV=1.4 (25mm) 5/2 and 3/2 NC,CV=1.4 (25mm)
气源接口 / Port size	G1/4"BSPP 或 NPT1/4 G1/4"BSPP or NPT1/4
安装标准 Mount standard	24*32NAMUR 板接或管接通用 24*32NAMUR and pipe connection
紧固螺钉 / Fix screws	不锈钢 / M5*40 Stainless steel
防护等级 / Protection class	IP65/NEMA4,4X
防爆等级 / Ex-proof class	无 / NO
工作温度 / Working temperature	-10°C~80°C
工作压力 / Working pressure	1~8 bar
工作介质 Working medium	经过过滤 (< =40um) 干燥和润滑的空气或中 性气体 (< =40um) dry and lubricated air
工作寿命 / Life cycles	1000 万次以上 (正常工作条件) 10 millions

电磁线圈 / Solenoid Specification	
工作电源 / Voltage	24VDC-3.5W (50/60HZ) 110/220VAC-4VA 240VAC-4.5VA
线圈外壳 / Coil cover	不锈钢 316 Stainless steel 316
电缆接口 / Cable plug	M20*1.5 1/2"BSPP 或 NPT M20*1.5 1/2"BSPP or NPT
绝缘等级 / insulation grade	H Class Coil
抗电强度 / (dielectric strength)	1000V
负载周期 / Duty cycles	100%ED
防护等级 / Protection class	IP66
防爆等级 / Ex-proof class	ExdIICT6 DIPA20 TA,T6
工作温度 / Working temperature	-30°C~120°C



# SSW562T6 不锈钢隔爆电磁阀

## SSW562T6 Stainless steel flameproof type solenoid valves



### IP66 ExdIICT6 DIPA20 TA, T6

依据 NAMUR 国际标准, SSW 不锈钢 316L 双电控隔爆电磁阀包含了 NAMUR 板接式、管接式、2/3、2/5 四种功能, 可直接控制单作用和双作用气动执行器, 并且配置了安全可靠的手动装置, 是一款真正的不锈钢 316L 双电控隔爆电磁阀。由于其特有的不锈钢 316L 阀体、高等级的防爆性能特别适用于石化、海洋平台等高腐蚀、高防爆环境中使用。在长时间通电情况下选择双电控电磁阀比较合理, 使用寿命长。

NAMUR Standard. SSW Stainless steel 316L.ex-proof contains Namur and pipe connection.3/2 and 5/2 functions. Can control the single and double acting actuators. It come with reliable manual override. Widely use in any corrosion condition. Double coil

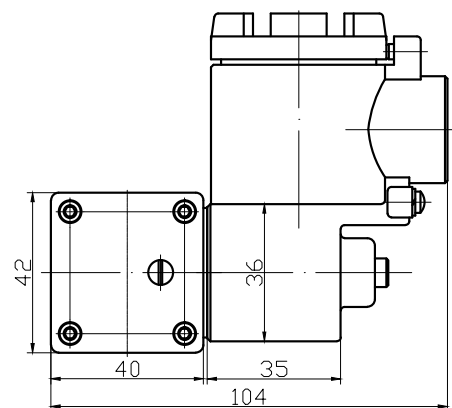
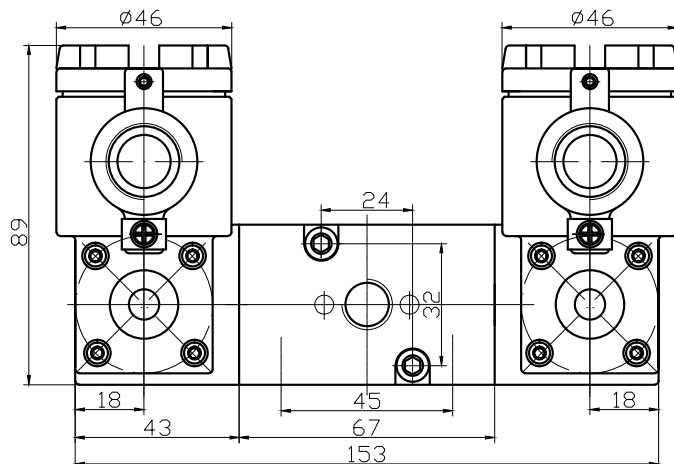
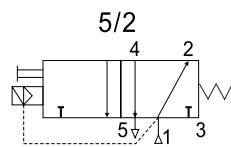
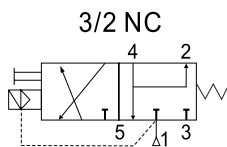
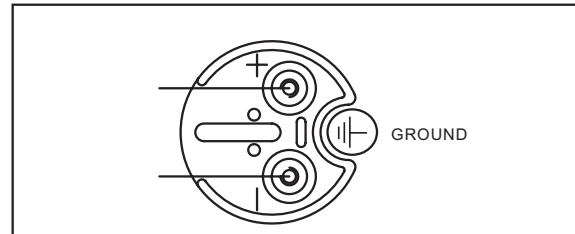
FLUID AUTOMATIC COMPONENT



流体自控元件

技术规格和参数 / Specification	
阀体材料 / Body Material	不锈钢 /316L SS 316L
外表处理 / Finishing	电解抛光 / electrochemical polishing
密封 / Seal	丁晴橡胶 "O" 形圈 NBR
介质接触材料 Material in contact with fluid	不锈钢 316, 丁晴橡胶 POM SS316. NBR,POM
阀体功能及 CV 值 Function and CV value	5/2 及 3/2 NC,CV=1.4 (25mm) 5/2 and 3/2 NC,CV=1.4 (25mm)
气源接口 / Port size	G1/4"BSPP 或 NPT1/4 G1/4"BSPP or NPT1/4
安装标准 Mount standard	24*32NAMUR 板接或管接通用 24*32NAMUR and pipe connection
紧固螺钉 / Fix screws	不锈钢 /M5*40 Stainless steel
防护等级 / Protection class	IP65/NEMA4,4X
防爆等级 / Ex-proof class	无 / NO
工作温度 / Working temperature	-10°C~80°C
工作压力 / Working pressure	1~8 bar
工作介质 Working medium	经过过滤 (<=40um) 干燥和润滑的空气或中 性气体 (<=40um) dry and lubricated air
工作寿命 / Life cycles	1000 万次以上 (正常工作条件) 10 millions

电磁线圈 / Solenoid Specification	
工作电源 / Voltage	24VDC-3.5W (50/60HZ) 110/220VAC-4VA 240VAC-4.5VA
线圈外壳 / Coil cover	不锈钢 316 Stainless steel 316
电缆接口 / Cable plug	M20*1.5 1/2"BSPP 或 NPT M20*1.5 1/2"BSPP or NPT
绝缘等级 / insulation grade	H Class Coil
抗电强度 / (dielectric strength)	1000V
负载周期 / Duty cycles	100%ED
防护等级 / Protection class	IP66
防爆等级 / Ex-proof class	ExdIICT6 DIPA20 TA,T6
工作温度 / Working temperature	-30°C~120°C



# SV561T6 铝材隔爆电磁换向阀 SV561T6 Aluminum flameproof type solenoid valves



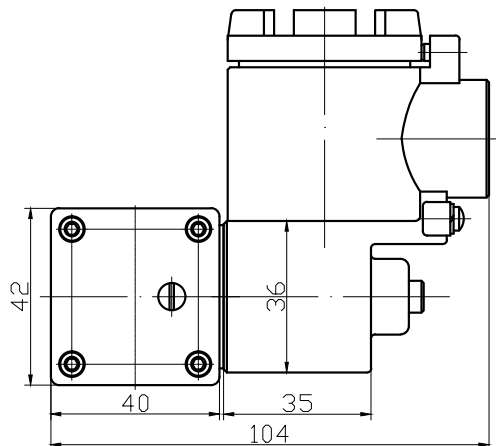
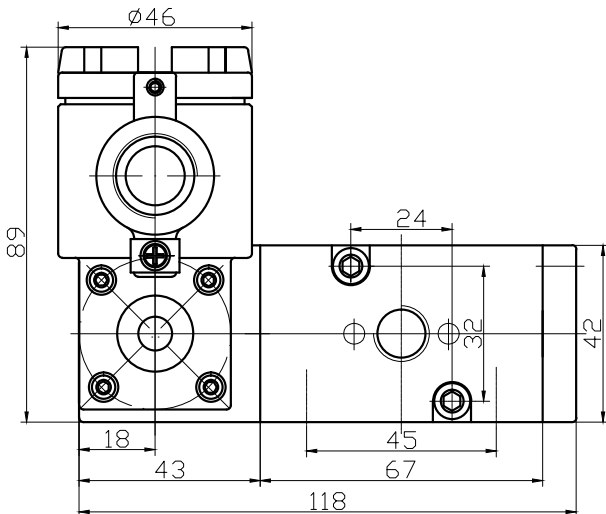
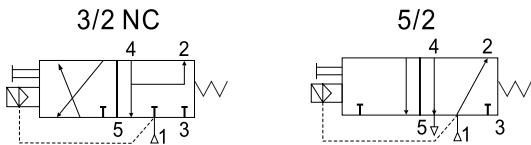
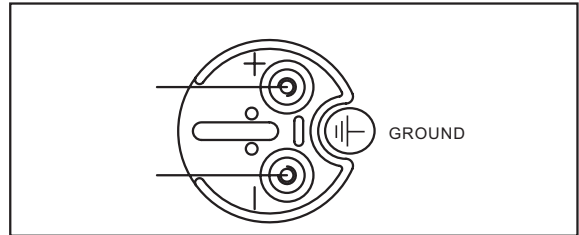
IP66 ExdIICT6 DIPA20 TA, T6

依据 NAMUR 国际标准, SV 电磁阀包含了 NAMUR 板接式、管接式、2/3、2/5 四种功能, 可直接控制单作用和双作用气动执行器, 并且配置了安全可靠的手动装置, 是一款真正的多功能电磁阀。由于其特有的气路结构, SV 电磁阀体上所有呼吸孔均与排气孔相通, 阀体表面无呼吸孔与大气相通, 能有效地防止外界液体、尘土和杂质进入阀体, 特别适合在室外或粉尘污染严重的工作环境中使用。

NAMUR standard; SV contains NAMUR solenoid plate type, the pipe joint type, 2/3, 2/5 of the four functions, can be directly control pneumatic actuators of single and double action, and configuration manual device, safe and reliable is a real multi-function solenoid valve. Due to its unique structure, gas path SV electromagnetic body all breathing holes and vents are interlinked, body surface without breathing holes and atmosphere are interlinked, can effectively prevent outside liquid, dust and impurities from entering the body, especially suitable for outdoor use or dust pollution serious work environment.

技术规格和参数 / Specification	
阀体材料 / Body Material	冷挤压铝合金 / extruded Aluminum
外表处理 / Finishing	阳极氧化或化学镀镍 / Anodized
密封 / Seal	丁晴橡胶 "O" 形圈 NBR
介质接触材料 Material in contact with fluid	铝, 增强尼龙, 丁晴橡胶 Aluminum, forces Nylon, NBR
阀体功能及 CV 值 Function and CV value	5/2 及 3/2 NC, CV=1.4(25mm) 5/2 and 3/2 NC, CV=1.4(25mm)
气源接口 / Port size	G1/4"BSPP 或 NPT1/4 G1/4"BSPP or NPT1/4
安装标准 Mount standard	24*32NAMUR 板接或管接通用 24*32NAMUR and pipe connection
紧固螺钉 / Fix screws	不锈钢 / M5*40 Stainless steel
防护等级 / Protection class	IP65/NEMA4,4X
防爆等级 / Ex-proof class	无 / NO
工作温度 / Working temperature	-10°C~80°C
工作压力 / Working pressure	1~8 bar
工作介质 Working medium	经过过滤 (<=40um) 干燥和润滑的空气或中性气体 (<=40um) dry and lubricated air
工作寿命 / Life cycles	1000 万次以上 (正常工作条件) 10 millions

电磁线圈 / Solenoid Specification	
工作电源 / Voltage	24VDC-3.5W(50/60HZ) 110/220VAC-4VA 240VAC-4.5VA
线圈外壳 / Coil cover	不锈钢 316 Stainless steel 316
电缆接口 / Cable plug	M20*1.5 1/2"BSPP □ NPT M20*1.5 1/2"BSPP or NPT
绝缘等级 / insulation grade	H Class Coil
抗电强度 / (dielectric strength)	1000V
负载周期 / Duty cycles	100%ED
防护等级 / Protection class	IP66
防爆等级 / Ex-proof class	ExdIICT6 DIPA20 TA, T6
工作温度 / Working temperature	-30°C~120°C





# SV562T6 铝材隔爆电磁换向阀 SV562T6 Aluminum flameproof type solenoid valves

## IP66 ExdIICT6 DIPA20 TA, T6

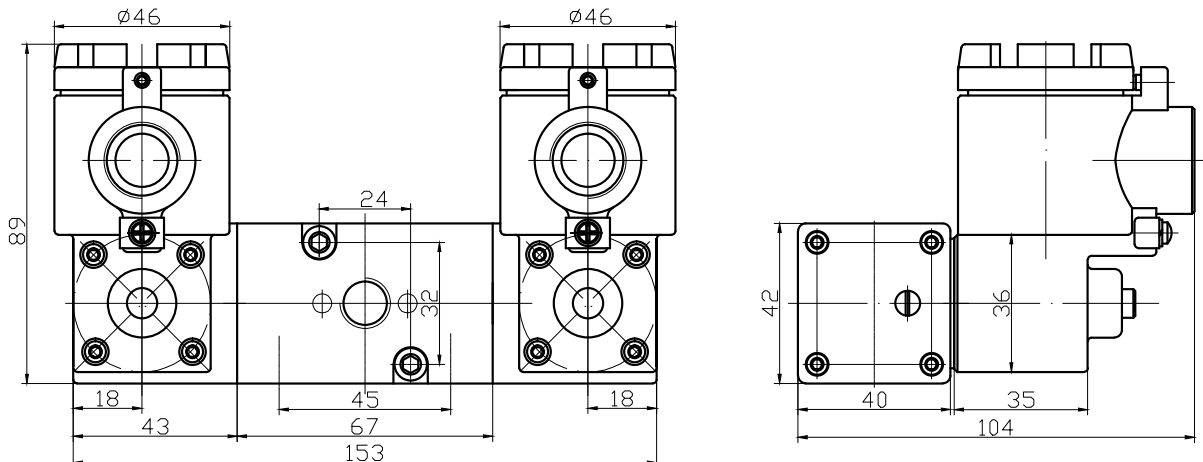
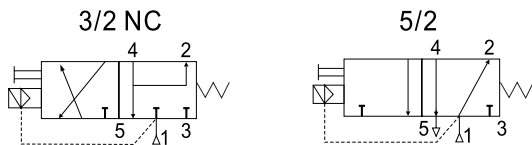
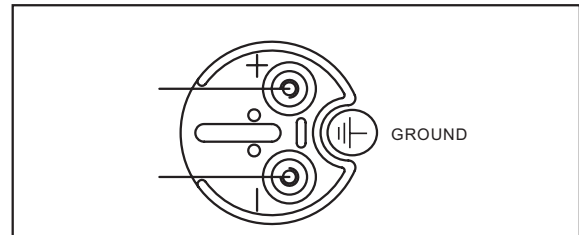


依据 NAMUR 国际标准, SV 电磁阀包含了 NAMUR 板接式、管接式、2/3、2/5 四种功能, 可直接控制单作用和双作用气动执行器, 并且配置了安全可靠的手动装置, 是一款真正的多功能电磁阀。由于其特有的气路结构, SV 电磁阀体上所有呼吸孔均与排气孔相通, 阀体表面无呼吸孔与大气相通, 能有效地防止外界液体、尘土和杂质进入阀体, 特别适合在室外或粉尘污染严重的工作环境中使用。

NAMUR standard; SV contains NAMUR solenoid plate type, the pipe joint type, 2/3, 2/5 of the four functions, can be directly control pneumatic actuators of single and double action, and configuration manual device, safe and reliable is a real multi-function solenoid valve. Due to its unique structure, gas path SV electromagnetic body all breathing holes and vents are interlinked, body surface without breathing holes and atmosphere are interlinked, can effectively prevent outside liquid, dust and impurities from entering the body, especially suitable for outdoor use or dust pollution serious work environment.

技术规格和参数 / Specification	
阀体材料 / Body Material	冷挤压铝合金 / extruded Aluminum
外表处理 / Finishing	阳极氧化或化学镀镍 / Anodized
密封 / Seal	丁晴橡胶 "O" 形圈 NBR
介质接触材料 Material in contact with fluid	铝, 增强尼龙, 丁晴橡胶 Aluminum, forces Nylon, NBR
阀体功能及 CV 值 Function and CV value	5/2 及 3/2 NC, CV=1.4(25mm) 5/2 and 3/2 NC, CV=1.4 (25mm)
气源接口 / Port size	G1/4"BSPP 或 NPT1/4 G1/4"BSPP or NPT1/4
安装标准 Mount standard	24*32NAMUR 板接或管接通用 24*32NAMUR and pipe connection
紧固螺钉 / Fix screws	不锈钢 / M5*40 Stainless steel
防护等级 / Protection class	IP65/NEMA4,4X
防爆等级 / Ex-proof class	无 / NO
工作温度 / Working temperature	-10°C~80°C
工作压力 / Working pressure	1~8 bar
工作介质 Working medium	经过过滤 (<=40um) 干燥和润滑的空气或中性气体 (<=40um) dry and lubricated air
工作寿命 / Life cycles	1000 万次以上 (正常工作条件) 10 millions

电磁线圈 / Solenoid Specification	
工作电源 / Voltage	24VDC-3.5W (50/60HZ) 110/220VAC-4VA 240VAC-4.5VA
线圈外壳 / Coil cover	不锈钢 316 Stainless steel 316
电缆接口 / Cable plug	M20*1.5 1/2"BSPP 或 NPT M20*1.5 1/2"BSPP or NPT
绝缘等级 / insulation grade	H Class Coil
抗电强度 / (dielectric strength)	1000V
负载周期 / Duty cycles	100%ED
防护等级 / Protection class	IP66
防爆等级 / Ex-proof class	ExdIICT6 DIPA20 TA, T6
工作温度 / Working temperature	-30°C~120°C



# CV561T6 铝材隔爆电磁换向阀 CV561T6 Aluminum flameproof type solenoid valves



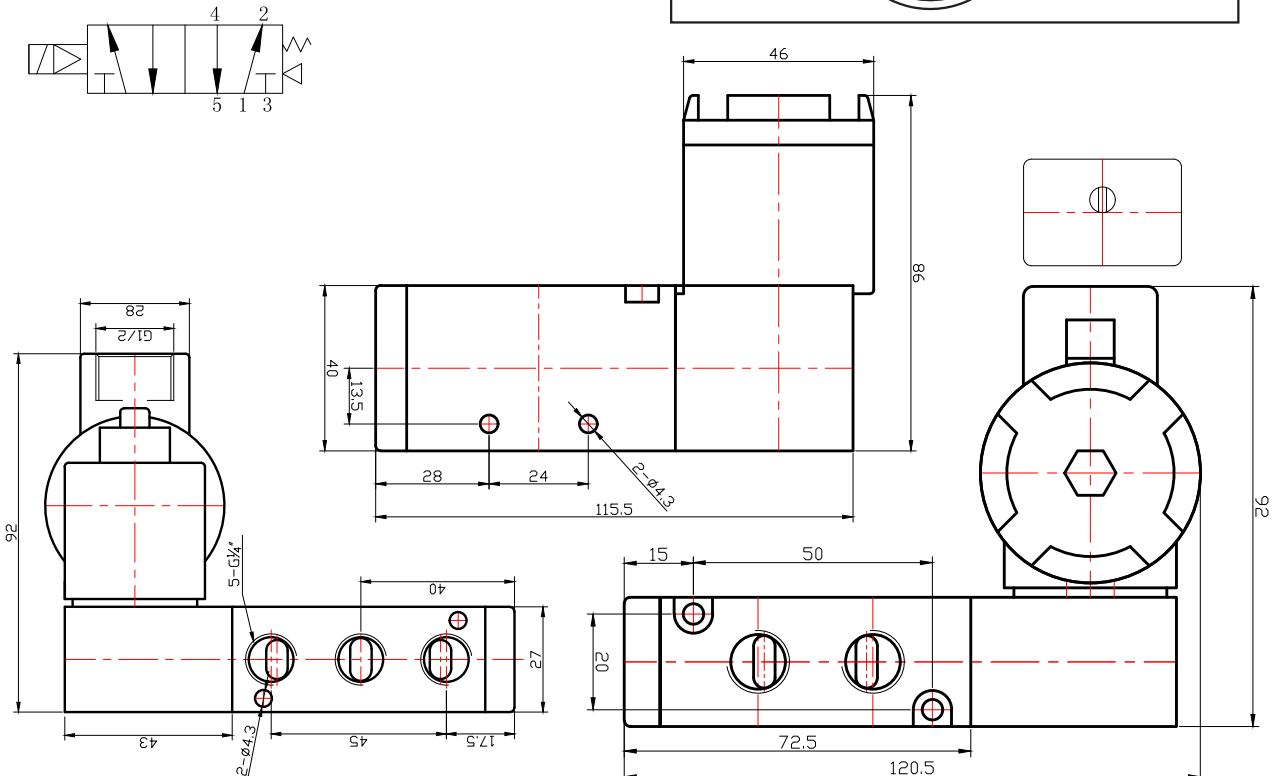
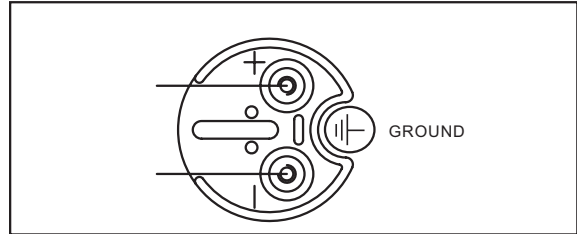
## IP66 ExdIICT6 DIPA20 TA, T6

CV 系列管式单电控防爆电磁阀，阀体采用精工铝材，高品质进口密封件，寿命长。可适用于 NPPC 防爆线圈。广泛运用于石油化工，船舶，纺织，造纸等行业。CV562T6 比 SV561T6 更加方便安装和使用，也是更经济实惠的一款新型防爆电磁阀。

CV Series Single coil Flameproof in-line solenoid valves. use Aluminum material and imported seals. Long working life. Used NPPC ex-plosion coil. Widely use in OIL. GAS . BOAT.TEXTILE AND PLASTIC INDUSTRY. CV flameproof valves was economy type than SV flameproof valves.. Easy install and operator.

技术规格和参数 / Specification	
阀体材料 / Body Material	冷挤压铝合金 / extruded Aluminum
外表处理 / Finishing	阳极氧化或化学镀镍 / Anodized
密封 / Seal	丁腈橡胶 "O" 形圈 NBR
介质接触材料 Material in contact with fluid	铝, 增强尼龙, 丁腈橡胶 Aluminum, forces Nylon.NBR
阀体功能及 CV 值 Function and CV value	5/2 及 3/2 NC, CV=1.4 (25mm) 5/2 and 3/2 NC, CV=1.4 (25mm)
气源接口 / Port size	G1/4"BSPP 或 NPT1/4 G1/4"BSPP or NPT1/4
安装标准 Mount standard	24*32NAMUR 板接或管接通用 24*32NAMUR and pipe connection
防护等级 / Protection class	IP65/NEMA4,4X
防爆等级 / Ex-proof class	无 / NO
工作温度 / Working temperature	-10°C~80°C
工作压力 / Working pressure	1~8 bar
工作介质 Working medium	经过过滤 (< =40um) 干燥和润滑的空气或中 性气体 (< =40um) dry and lubricated air
工作寿命 / Life cycles	1000 万次以上 (正常工作条件) 10 millions

电磁线圈 / Solenoid Specification	
工作电源 / Voltage	24VDC-3.5W (50/60HZ) 110/220VAC-4VA 240VAC-4.5VA
线圈外壳 / Coil cover	不锈钢 316 Stainless steel 316
电缆接口 / Cable plug	M20*1.5 1/2"BSPP 或 NPT M20*1.5 1/2"BSPP or NPT
绝缘等级 / insulation grade	H Class Coil
抗电强度 / (dielectric strength)	1000V
负载周期 / Duty cycles	100%ED
防护等级 / Protection class	IP66
防爆等级 / Ex-proof class	ExdIICT6 DIPA20 TA, T6
工作温度 / Working temperature	-30°C~120°C



# CV562T6 铝材隔爆电磁换向阀 CV562T6 Aluminum flameproof type solenoid valves

## IP66 ExdIICT6 DIPA20 TA, T6



CV 系列管式双电控防爆电磁阀，阀体采用精加工铝材，高品质进口密封件，寿命长。可适用于 NPPC 防爆线圈。广泛运用于石油化工，船舶，纺织，造纸等行业。CV 防爆比 SV 防爆更加方便安装和使用，也是更经济实惠的一款新型防爆电磁阀。

CV Series double coil in-line Flameproof solenoid valves. use Aluminum material and imported seals. Long working life. Used NPPC explosion coil. Widely use in OIL. GAS. BOAT. TEXTILE AND PLASTIC INDUSTRY. CV flameproof valves was economy type than SV flameproof valves.. Easy install and operator.

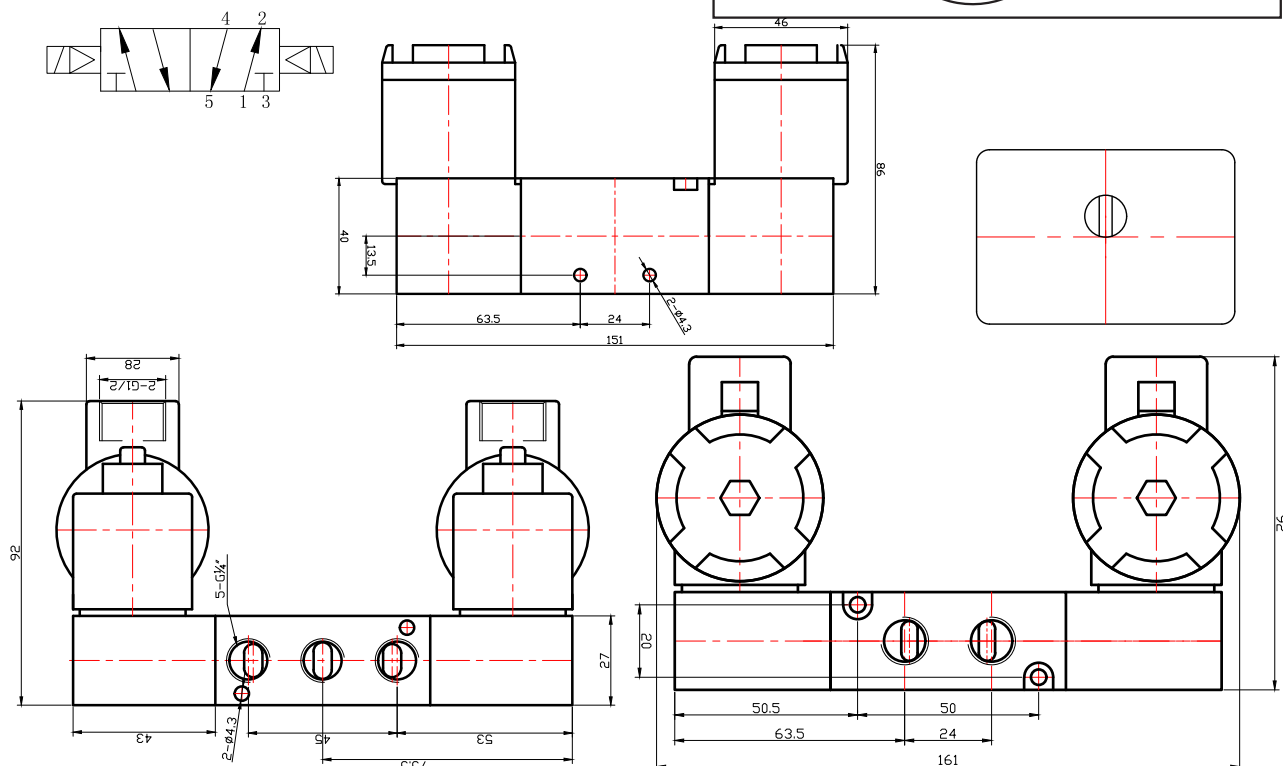
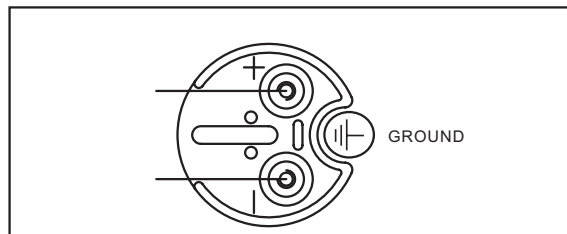
FLUID AUTOMATIC COMPONENT



流体自控元件

技术规格和参数 / Specification	
阀体材料 / Body Material	冷挤压铝合金 / extruded Aluminum
外表处理 / Finishing	阳极氧化或化学镀镍 / Anodized
密封 / Seal	丁晴橡胶 "O" 形圈 NBR
介质接触材料 Material in contact with fluid	铝, 增强尼龙, 丁晴橡胶 Aluminum, forces Nylon. NBR
阀体功能及 CV 值 Function and CV value	5/2 及 3/2 NC, CV=1.4 (25mm) 5/2 and 3/2 NC, CV=1.4 (25mm)
气源接口 / Port size	G1/4"BSPP 或 NPT1/4 G1/4"BSPP or NPT1/4
安装标准 Mount standard	24*32NAMUR 板接或管接通用 24*32NAMUR and pipe connection
防护等级 / Protection class	IP65/NEMA4, 4X
防爆等级 / Ex-proof class	无 / NO
工作温度 / Working temperature	-10°C~80°C
工作压力 / Working pressure	1~8 bar
工作介质 Working medium	经过过滤 (<=40um) 干燥和润滑的空气或中性气体 (<=40um) dry and lubricated air
工作寿命 / Life cycles	1000 万次以上 (正常工作条件) 10 millions

电磁线圈 / Solenoid Specification	
工作电源 / Voltage	24VDC-3.5W (50/60HZ) 110/220VAC-4VA 240VAC-4.5VA
线圈外壳 / Coil cover	不锈钢 316 Stainless steel 316
电缆接口 / Cable plug	M20*1.5 1/2"BSPP 或 NPT M20*1.5 1/2"BSPP or NPT
绝缘等级 / insulation grade	H Class Coil
抗电强度 / (dielectric strength)	1000V
负载周期 / Duty cycles	100%ED
防护等级 / Protection class	IP66
防爆等级 / Ex-proof class	ExdIICT6 DIPA20 TA, T6
工作温度 / Working temperature	-30°C~120°C



# CMC561T6 铝材隔爆电磁换向阀 CMC561T6 Aluminum flameproof type solenoid valves

## IP66 ExdIICT6 DIPA20 TA, T6

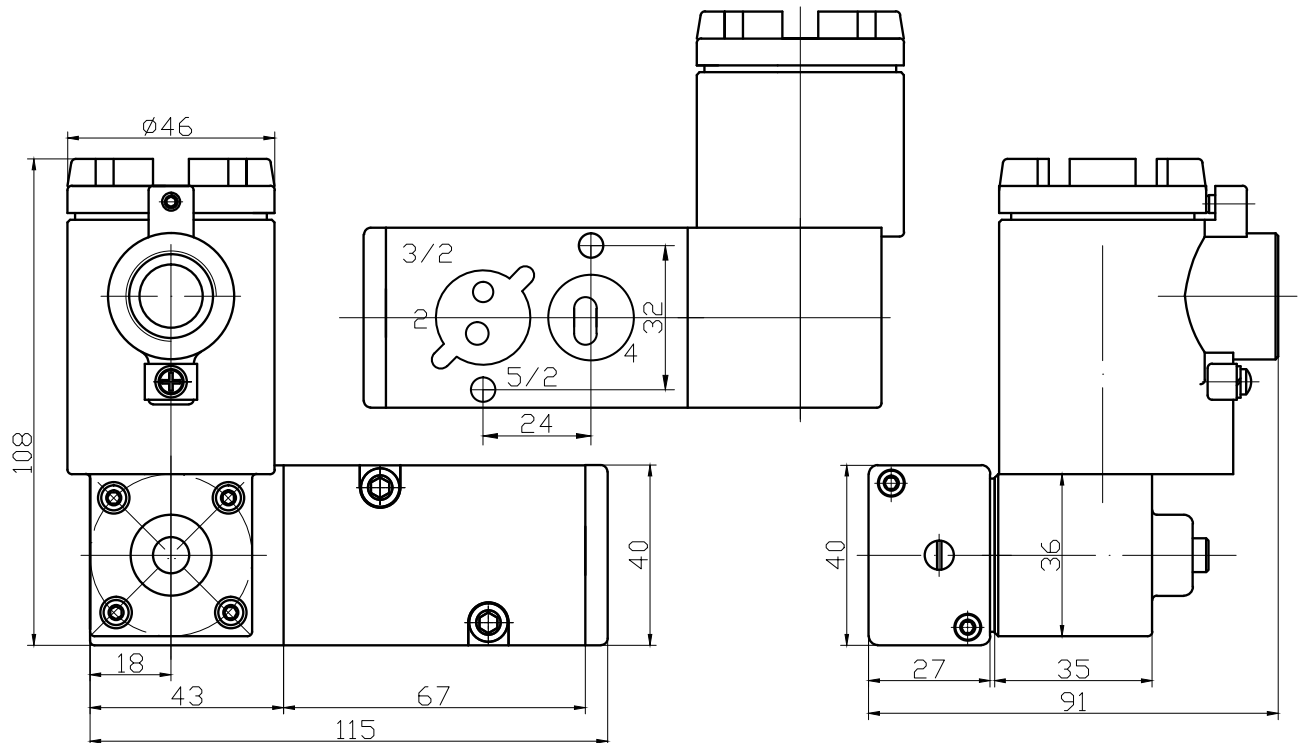
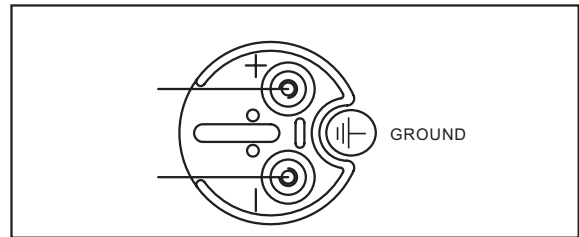
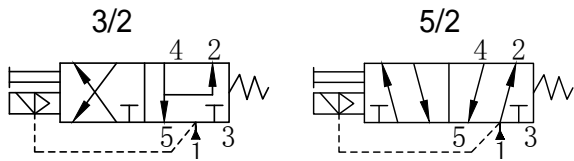


依据 NAMUR 国际标准, 可直接控制单作用和双作用气动执行器, 并且配置了安全可靠的手动装置, 是一款真正的多功能电磁阀。由于其特有的气路结构, CMC561 电磁阀体上所有呼吸孔均与排气孔相通, 阀体表面无呼吸孔与大气相通, 能有效地防止外界液体、尘土和杂质进入阀体, 特别适合在室外或粉尘污染严重的工作环境中使用。

NAMUR standard; CMC561 contains NAMUR solenoid plate type, can be directly control pneumatic actuators of single and double action, and configuration manual device, safe and reliable is a real multi-function solenoid valve. Due to its unique structure, gas path CM561 electromagnetic body all breathing holes and vents are interlinked, body surface without breathing holes and atmosphere are interlinked, can effectively prevent outside liquid, dust and impurities from entering the body, especially suitable for outdoor use or dust pollution serious work environment.

技术规格和参数 / Specification	
阀体材料 / Body Material	冷挤压铝合金 / extruded Aluminum
外表处理 / Finishing	阳极氧化或化学镀镍 / Anodized
密封 / Seal	丁晴橡胶 "O" 形圈 NBR
介质接触材料 Material in contact with fluid	铝, 增强尼龙, 丁晴橡胶 Aluminum, forces Nylon, NBR
CV 值 CV value	CV=1.4 (25mm)
气源接口 / Port size	G1/4"BSPP 或 NPT1/4 G1/4"BSPP or NPT1/4
安装标准 / Mount standard	24*32NAMUR
紧固螺钉 / Fix screws	不锈钢 / M5*27 Stainless steel
防护等级 / Protection class	IP65/NEMA4,4X
防爆等级 / Ex-proof class	无 / NO
工作温度 / Working temperature	-10°C~80°C
工作压力 / Working pressure	1~8 bar
工作介质 Working medium	经过过滤 (<=40um) 干燥和润滑的空气或中性气体 (<=40um) dry and lubricated air
工作寿命 / Life cycles	1000 万次以上 (正常工作条件) 10 millions

电磁线圈 / Solenoid Specification	
工作电源 / Voltage	24VDC-3.5W (50/60HZ) 110/220VAC-4VA 240VAC-4.5VA
线圈外壳 / Coil cover	不锈钢 316 Stainless steel 316
电缆接口 / Cable plug	M20*1.5 1/2"BSPP 或 NPT M20*1.5 1/2"BSPP or NPT
绝缘等级 / insulation grade	H Class Coil
抗电强度 / (dielectric strength)	1000V
负载周期 / Duty cycles	100%ED
防护等级 / Protection class	IP66
防爆等级 / Ex-proof class	ExdIICT6 DIPA20 TA, T6
工作温度 / Working temperature	-30°C~120°C





# CMC562T6 铝材隔爆电磁换向阀 CMC562T6 Aluminum flameproof type solenoid valves



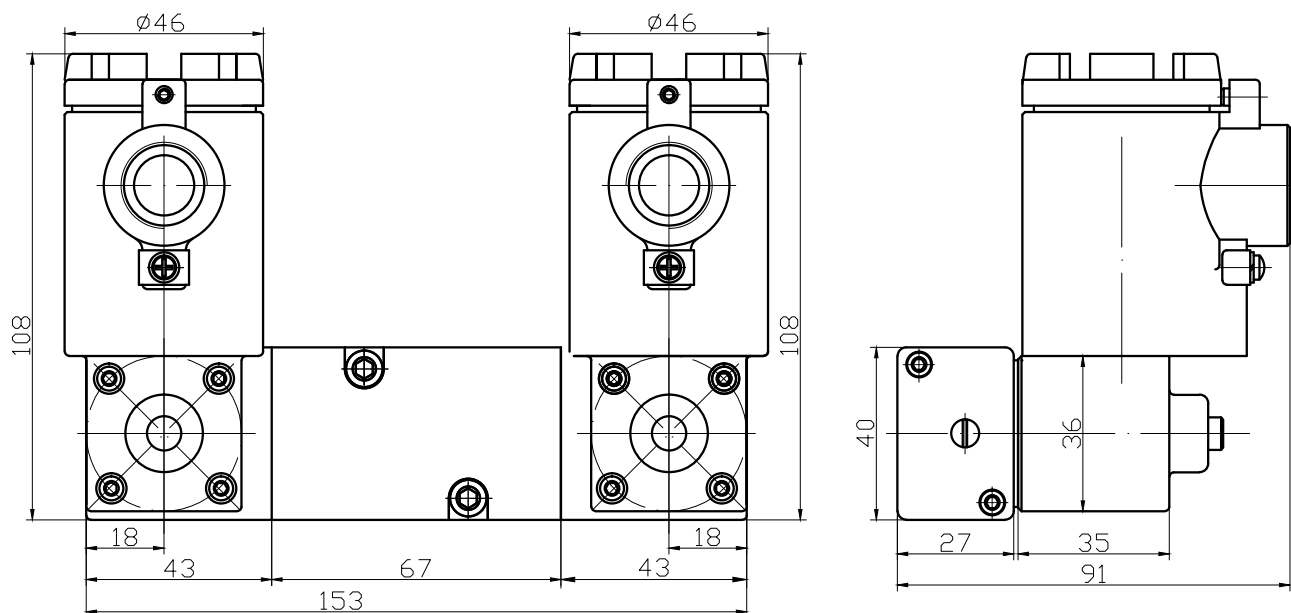
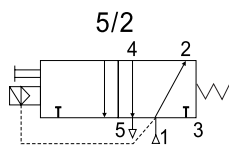
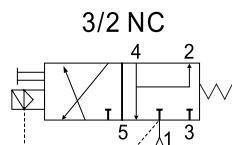
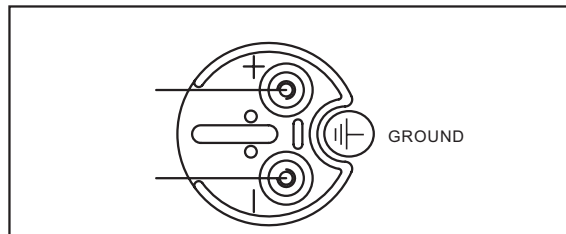
## IP66 ExdIICT6 DIPA20 TA, T6

依据 NAMUR 国际标准, 可直接控制单作用和双作用气动执行器, 并且配置了安全可靠的手动装置, 是一款真正的多功能电磁阀。由于其特有的气路结构, CMC562 电磁阀体上所有呼吸孔均与排气孔相通, 阀体表面无呼吸孔与大气相通, 能有效地防止外界液体、尘土和杂质进入阀体, 特别适合在室外或粉尘污染严重的工作环境中使用。

NAMUR standard; CMC562 contains NAMUR solenoid plate type, can be directly control pneumatic actuators of single and double action, and configuration manual device, safe and reliable is a real multi-function solenoid valve. Due to its unique structure, gas path CMC562 electromagnetic body all breathing holes and vents are interlinked, body surface without breathing holes and atmosphere are interlinked, can effectively prevent outside liquid, dust and impurities from entering the body, especially suitable for outdoor use or dust pollution serious work environment.

技术规格和参数 / Specification	
阀体材料 / Body Material	冷挤压铝合金 / extruded Aluminum
外表处理 / Finishing	阳极氧化或化学镀镍 / Anodized
密封 / Seal	丁晴橡胶 "O" 形圈 NBR
介质接触材料 Material in contact with fluid	铝, 增强尼龙, 丁晴橡胶 Aluminum, forces Nylon, NBR
阀体功能及 CV 值 Function and CV value	5/2 及 3/2 NC, CV=1.4 (25mm) 5/2 and 3/2 NC, CV=1.4 (25mm)
气源接口 / Port size	G1/4"BSPP 或 NPT1/4 G1/4"BSPP or NPT1/4
安装标准 Mount standard	24*32NAMUR 板接或管接通用 24*32NAMUR and pipe connection
紧固螺钉 / Fix screws	不锈钢 / M5*27 Stainless steel
防护等级 / Protection class	IP65/NEMA4,4X
防爆等级 / Ex-proof class	无 / NO
工作温度 / Working temperature	-10°C~80°C
工作压力 / Working pressure	1~8 bar
工作介质 Working medium	经过过滤 (<=40um) 干燥和润滑的空气或中性气体 (<=40um) dry and lubricated air
工作寿命 / Life cycles	1000 万次以上 (正常工作条件) 10 millions

电磁线圈 / Solenoid Specification	
工作电源 / Voltage	24VDC-3.5W (50/60HZ) 110/220VAC-4VA 240VAC-4.5VA
线圈外壳 / Coil cover	不锈钢 316 Stainless steel 316
电缆接口 / Cable plug	M20*1.5 1/2"BSPP 或 NPT M20*1.5 1/2"BSPP or NPT
绝缘等级 / insulation grade	H Class Coil
抗电强度 / (dielectric strength)	1000V
负载周期 / Duty cycles	100%ED
防护等级 / Protection class	IP66
防爆等级 / Ex-proof class	ExdIICT6 DIPA20 TA, T6
工作温度 / Working temperature	-30°C~120°C



FLUID AUTOMATIC COMPONENT



流体自控元件

# CM561T6 铝材隔爆电磁换向阀 CM561T6 Aluminum flameproof type solenoid valves

## IP66 ExdIICT6 DIPA20 TA, T6

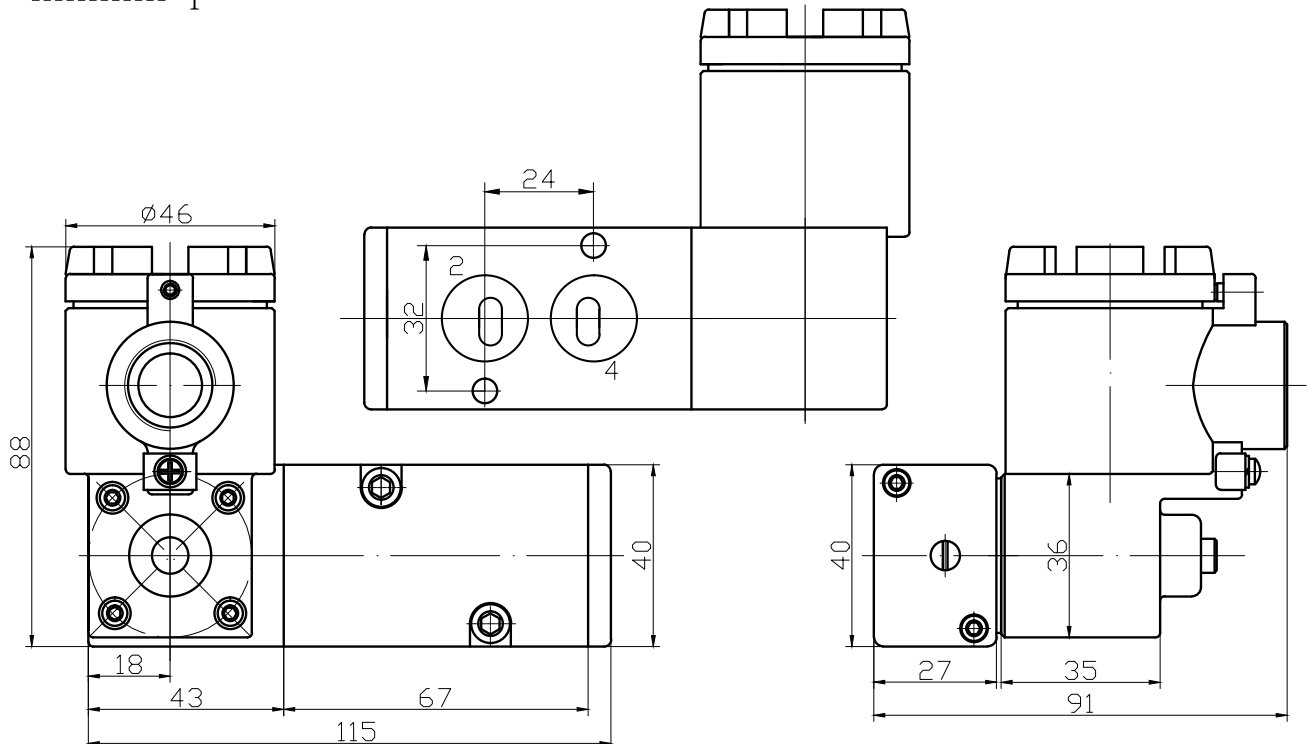
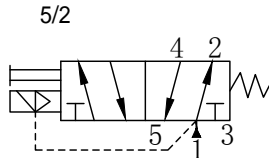
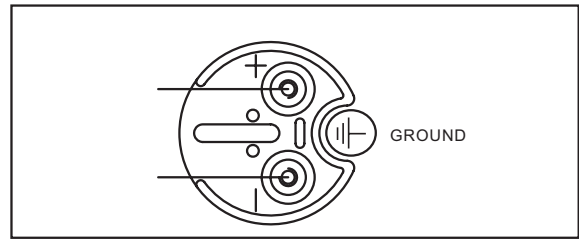


依据 NAMUR 国际标准, 可直接控制单作用和双作用气动执行器, 并且配置了安全可靠的手动装置, 是一款真正的多功能电磁阀。由于其特有的气路结构, CM561 电磁阀体上所有呼吸孔均与排气孔相通, 阀体表面无呼吸孔与大气相通, 能有效地防止外界液体、尘土和杂质进入阀体, 特别适合在室外或粉尘污染严重的工作环境中使用。

NAMUR standard; CM561 contains NAMUR solenoid plate type, can be directly control pneumatic actuators of single and double action, and configuration manual device, safe and reliable is a real multi-function solenoid valve. Due to its unique structure, gas path CM561 electromagnetic body all breathing holes and vents are interlinked, body surface without breathing holes and atmosphere are interlinked, can effectively prevent outside liquid, dust and impurities from entering the body, especially suitable for outdoor use or dust pollution serious work environment.

技术规格和参数 / Specification	
阀体材料 / Body Material	冷挤压铝合金 / extruded Aluminum
外表处理 / Finishing	阳极氧化或化学镀镍 / Anodized
密封 / Seal	丁晴橡胶 "O" 形圈 NBR
介质接触材料 Material in contact with fluid	铝, 增强尼龙, 丁晴橡胶 Aluminum, forces Nylon, NBR
CV 值 CV value	CV=1.4 (25mm)
气源接口 / Port size	G1/4"BSPP 或 NPT1/4 G1/4"BSPP or NPT1/4
安装标准 / Mount standard	24*32NAMUR
紧固螺钉 / Fix screws	不锈钢 / M5*27 Stainless steel
防护等级 / Protection class	IP65/NEMA4,4X
防爆等级 / Ex-proof class	无 / NO
工作温度 / Working temperature	-10°C~80°C
工作压力 / Working pressure	1~8 bar
工作介质 Working medium	经过过滤 (<=40um) 干燥和润滑的空气或中性气体 (<=40um) dry and lubricated air
工作寿命 / Life cycles	1000 万次以上 (正常工作条件) 10 millions

电磁线圈 / Solenoid Specification	
工作电源 / Voltage	24VDC-3.5W (50/60HZ) 110/220VAC-4VA 240VAC-4.5VA
线圈外壳 / Coil cover	不锈钢 316 Stainless steel 316
电缆接口 / Cable plug	M20*1.5 1/2"BSPP 或 NPT M20*1.5 1/2"BSPP or NPT
绝缘等级 / insulation grade	H Class Coil
抗电强度 / (dielectric strength)	1000V
负载周期 / Duty cycles	100%ED
防护等级 / Protection class	IP66
防爆等级 / Ex-proof class	ExdIICT6 DIPA20 TA, T6
工作温度 / Working temperature	-30°C~120°C



# CM562T6 铝材隔爆电磁换向阀 CM562T6 Aluminum flameproof type solenoid valves

## IP66 ExdIICT6 DIPA20 TA, T6



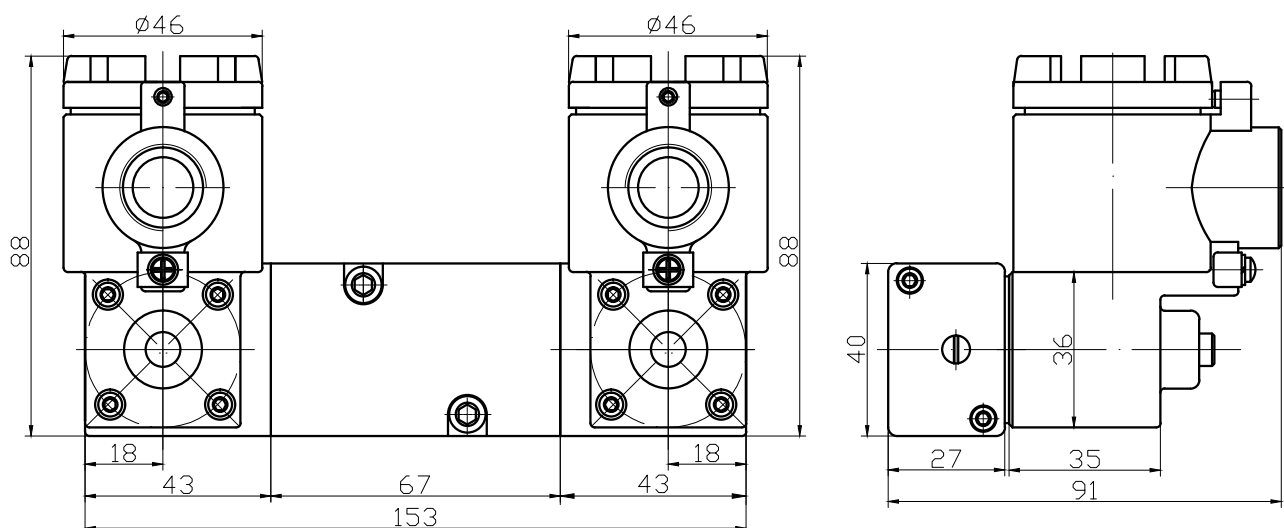
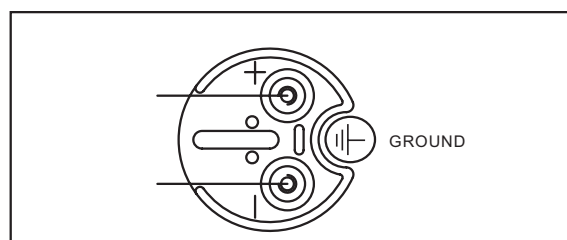
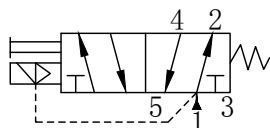
依据 NAMUR 国际标准, 可直接控制单作用和双作用气动执行器, 并且配置了安全可靠的手动装置, 是一款真正的多功能电磁阀。由于其特有的气路结构, CM562 电磁阀体上所有呼吸孔均与排气孔相通, 阀体表面无呼吸孔与大气相通, 能有效地防止外界液体、尘土和杂质进入阀体, 特别适合在室外或粉尘污染严重的工作环境中使用。

NAMUR standard; CM562 contains NAMUR solenoid plate type, can be directly control pneumatic actuators of single and double action, and configuration manual device, safe and reliable is a real multi-function solenoid valve. Due to its unique structure, gas path CM562 electromagnetic body all breathing holes and vents are interlinked, body surface without breathing holes and atmosphere are interlinked, can effectively prevent outside liquid, dust and impurities from entering the body, especially suitable for outdoor use or dust pollution serious work environment.

技术规格和参数 / Specification	
阀体材料 / Body Material	冷挤压铝合金 / extruded Aluminum
外表处理 / Finishing	阳极氧化或化学镀镍 / Anodized
密封 / Seal	丁晴橡胶 "O" 形圈 NBR
介质接触材料 Material in contact with fluid	铝, 增强尼龙, 丁晴橡胶 Aluminum, forces Nylon, NBR
CV 值 CV value	CV=1.4 (25mm)
气源接口 / Port size	G1/4"BSPP 或 NPT1/4 G1/4"BSPP or NPT1/4
安装标准 Mount standard	24*32NAMUR
紧固螺钉 / Fix screws	不锈钢 / M5*27 Stainless steel
防护等级 / Protection class	IP65/NEMA4,4X
防爆等级 / Ex-proof class	无 / NO
工作温度 / Working temperature	-10°C~80°C
工作压力 / Working pressure	1~8 bar
工作介质 Working medium	经过过滤 (<=40um) 干燥和润滑的空气或中性气体 (<=40um) dry and lubricated air
工作寿命 / Life cycles	1000 万次以上 (正常工作条件) 10 millions

电磁线圈 / Solenoid Specification	
工作电源 / Voltage	24VDC-3.5W (50/60HZ) 110/220VAC-4VA 240VAC-4.5VA
线圈外壳 / Coil cover	不锈钢 316 Stainless steel 316
电缆接口 / Cable plug	M20*1.5 1/2"BSPP 或 NPT M20*1.5 1/2"BSPP or NPT
绝缘等级 / insulation grade	H Class Coil
抗电强度 / (dielectric strength)	1000V
负载周期 / Duty cycles	100%ED
防护等级 / Protection class	IP66
防爆等级 / Ex-proof class	ExdIICT6 DIPA20 TA, T6
工作温度 / Working temperature	-30°C~120°C

5/2



FLUID AUTOMATIC COMPONENT



流体自控元件

# AT 系列气动执行器 /AT PNEUMATIC ACTUATOR



技术参数 / Technical Specification	
压力 / Pressure Range	
最大压力: Max Working Pressure:	10bar
双作用: Double acting:	2.5bar~8bar
单作用: Single acting:	4.5bar~8bar
温度范围 /Temperature Range	
标准: Standard:	-20°C~80°C
可选: Option:	-35°C~80°C/-20°C~-150°C
旋转角度: Rotate Angle:	90°±5%
润滑油: Lubrication:	所有的部件都已经添加润滑油, 延长使用寿命 ALL The kinetic components are coated with lubricants.make it have a long service life
寿命: life Time:	一百万次寿命 One million time

FLUID AUTOMATIC COMPONENT



流体自控元件

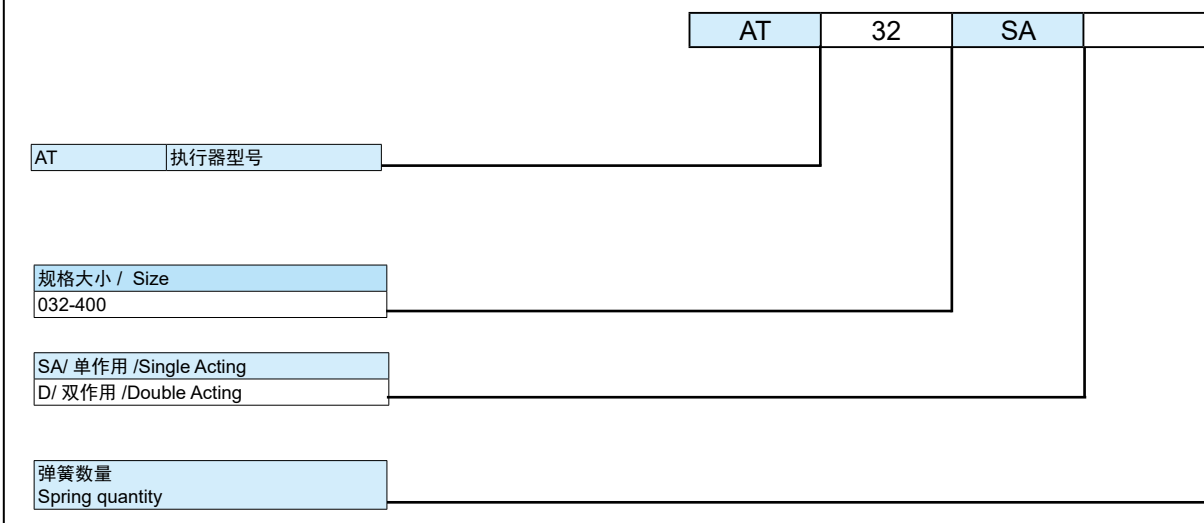
### AT 产品信息

AT 系列执行器结构紧凑、使用寿命长、质量高、齿轮和齿轮齿条。  
本产品适用于球阀、蝶阀、旋塞阀等 90° 开关阀门。我公司以产品质量为首要任务，采用最先进的生产技术，在产品质量和性能上均优于同类产品。  
AT 系列气动执行器设计紧凑，使用寿命长，质量高，机架式气动执行机构。

### Product Introduction

AT series actuators which compact design, long life service, high quality, gear and gear rack  
This product is used for 90° rotationally valves, such as: ball valves, butterfly valves, plug valves etc. My company put product quality as the first task, adopts the most advance production and technology, stronger than similar product on both product quality and performance.  
AT series air operated actuator is the design is compact, the life is long, the quality is high, rack, s-like air operated actuator.

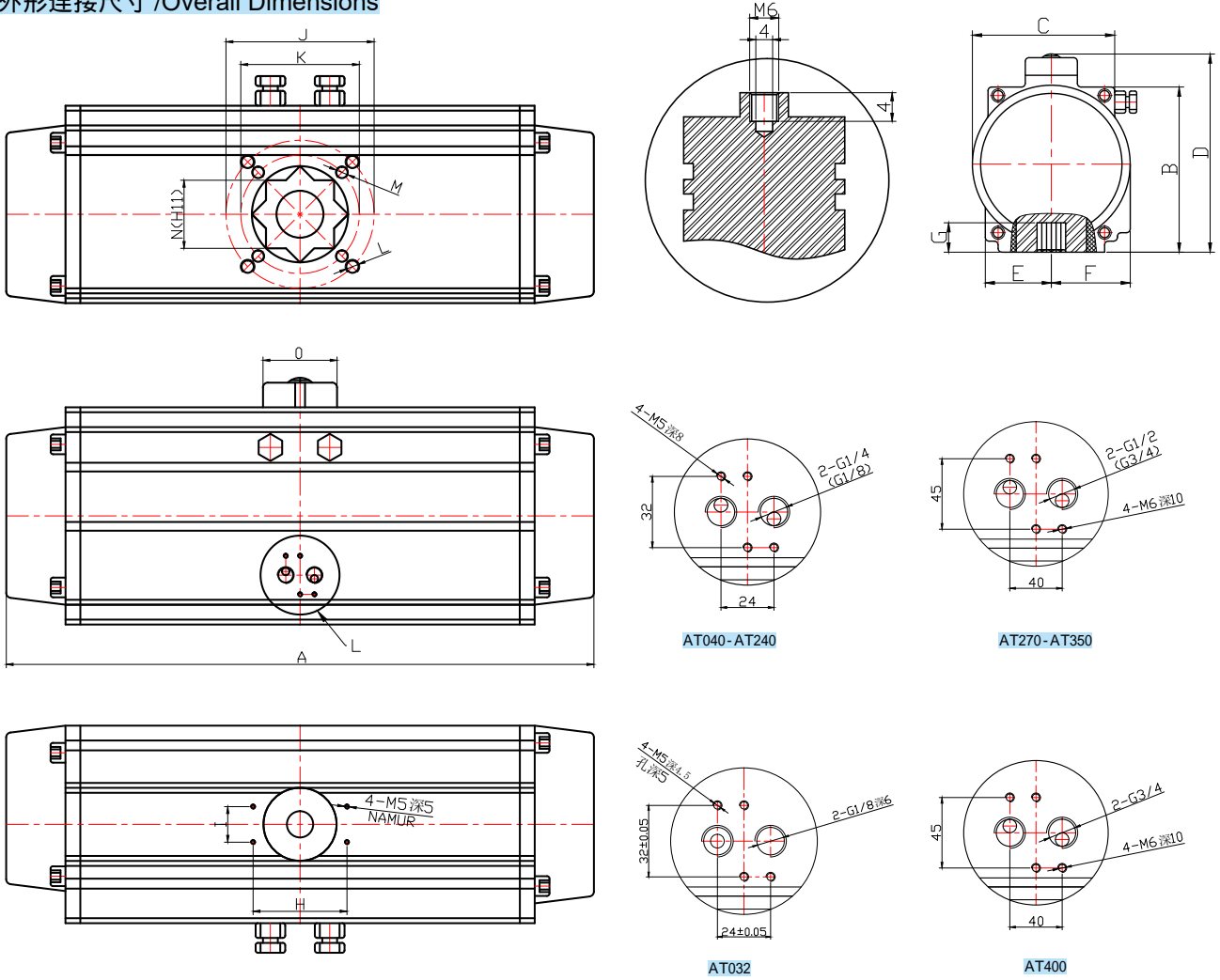
## 执行器订购码 / AT series actuator ordering code



外形连接尺寸 / Overall Dimensions

FLUID AUTOMATIC COMPONENT

流体自控元件



型号 Model	A	B	C	D	E	F	G	H	I	J	K	L	M	N	O	进气螺纹接口 Input thread size
AT032-DA	112	45	51	71	22.5	28.5	12	50	25		F03/Φ36		M5*8	9	Φ40	G1/8"
AT032-SA	142	45	51	71	22.5	28.5	12	50	25		F03/Φ36		M5*8	9	Φ40	G1/8"
AT040-DA	124	59.5	65	86	36.4	24	14	80	30	F05/Φ50	F03/Φ36	M6*9	M5*8	11	Φ40	G1/4"
AT040-SA	149	59.5	65	86	36.4	24	14	80	30	F05/Φ50	F03/Φ36	M6*9	M5*8	11	Φ40	G1/4"
AT052	163.5	72	65	98	26	42	14	80	30	F05/Φ50	F03/Φ36	M6*9	M5*8	11	Φ40	G1/4"
AT063	181	87.6	73	113	33	47	18	80	30	F07/Φ70	F05/Φ50	M8*10	M6*9	14	Φ40	G1/4"
AT075	207	99.4	80.2	125	38.7	52.5	20	80	30	F07/Φ70	F05/Φ50	M8*12	M6*9	14	Φ40	G1/4"
AT083	213	108.9	91.6	134.5	40	56.5	21	80	30	F07/Φ70	F05/Φ50	M8*12	M6*9	17	Φ40	G1/4"
AT092	258	117	98.3	143	44	59	21	80	30	F07/Φ70	F05/Φ50	M8*13	M6*10	17	Φ40	G1/4"
AT105	287	133	109.5	158.5	52	64	24.5	80	30	F10/Φ102	F07/Φ70	M10*15	M8*12	22	Φ40	G1/4"
AT125	342.5	154.4	127.2	180.5	59.7	74	29	80	30	F10/Φ102	F07/Φ70	M10*15	M8*12	22	Φ50	G1/4"
AT140	411	173.7	138	200	65	77	32	80	30	F12/Φ125	F10/Φ102	M12*20	M10*15	27	Φ60	G1/4"
AT160	488	198	158	224	73.8	86.7	34.5	80	30	F12/Φ125	F10/Φ102	M12*20	M10*15	27	Φ60	G1/4"
AT190	544	232.3	188.7	258	85.3	102.8	40	130	30	F14/Φ140		M16*22		36	Φ80	G1/4"
AT210	580	257.6	210.5	284	96.5	113.2	41	130	30	F14/Φ140		M16*24		36	Φ80	G1/4"
AT240	622	291	245	317	115	130	50	130	30	F16/Φ165		M20*26		46	Φ80	G3/8"
AT270	766	330	275	356	126	147	50	130	30	F16/Φ165		M20*26		46	Φ80	G1/2"
AT300	794	354	312	380	140	173	57	130	30	F16/Φ165		M20*26		46	Φ80	G1/2"
AT350	880	410	362	436	164	195	60	130	30	F16/Φ165		M20*26		46	Φ80	G1/2"
AT400	1067	446	450	493	145	145	60	130	30	F25/Φ254		M20*26		55	Φ80	G3/4"

注: A120、A180 分别表示角行程为 120°/180° 时执行长度 /Remark:A120 means the length of angle stroke is 120°, A180 means the length of angle stroke is 180°

AT 单作用执行器输出力矩 / Single Action Actuator output Torque

气源克服弹簧输出力矩 N.m The output torque of air source against spring N.m													弹簧输出力矩 N.m Spring output torque N.m	
气源压力 bar Air source pressure		3		4		5		6		7		0°	90°	
型号 Model	数量 Quantity of Springs	0°	90°	0°	90°	0°	90°	0°	90°	0°	90°	0°	90°	
		起点 start	终点 end	起点 start	终点 end	起点 start	终点 end	起点 start	终点 end	起点 start	终点 end	起点 start	终点 end	
AT032SA	2					4.76	0.92	6.26	2.42	7.26	3.42	2.74	6.58	
AT040-SA	2					7.59	1.18	9.93	3.52	11.5	5.09	4.13	10.54	
AT052SA	5	8.48	6.28	12.64	10.44							4	6.2	
	6	7.68	4.98	11.84	9.14							4.8	7.5	
	7	6.89	3.78	11.14	7.94							5.5	8.7	
	8			10.34	6.74	14.5	10.9					6.3	9.9	
	9			9.54	5.44	13.7	9.6					7.1	11.2	
	10			8.74	4.24	12.9	8.4	17.06	12.56			7.9	12.4	
	11					12.1	7.1	16.26	11.26	20.42	15.42	8.7	13.7	
AT063SA	5	15	11.2	22.3	18.5	29.6	25.8					7	10.8	
	6	13.5	9	20.8	16.3	28.1	23.7					8.5	12.95	
	7	12	6.9	19.4	14.2	26.7	21.5					9.9	15.1	
	8			18	12	25.3	19.3	32.6	26.6			11.3	17.3	
	9			16.5	9.9	23.9	17.2	31.2	24.52			12.7	19.4	
	10			15.3	7.7	22.6	15	29.9	22.3	37.2	29.6	14	21.6	
	11			13.8	5.6	21.1	12.9	28.4	20.2	35.7	27.5	15.5	23.7	
AT075SA	5	23.4	17.8	35.1	29.5							11.7	17.5	
	6	-21.1	14.3	32.8	26							14.2	21	
	7	-18.7	10.8	30.4	22.5							16.6	24.5	
	8			28	19	39.8	30.8					19	28	
	9			25.7	15.5	37.5	27.3					21.3	31.5	
	10			23.3	12	35.1	23.8	46.3	35.5	58.6	47.3	23.7	35	
	11					32.7	20.3	44.4	32	56.2	43.8	26.1	38.5	
AT083SA	5	30.9	23.8	46.1	38.9							14.5	21.7	
	6	28.1	19.5	43.3	34.6							17.39	26	
	7	25.2	15.1	40.3	30.2							20.3	30.4	
	8			37.4	25.9	52.6	41.1					23.2	34.7	
	9			34.5	21.5	49.7	36.7					26.1	39.1	
	10			31.6	17.2	46.8	32.4	6	47.6	77.1	62.7	29	43.4	
	11					43.9	28.1	59.1	43.3	74.2	58.4	31.9	47.7	
AT092SA	5	45.7	34.7	68.6	57.6							22.5	33.5	
	6	41.2	28	64.1	50.9							27	40.2	
	7	36.7	21.4	59.6	44.3							31.5	46.2	
	8			55.1	37.6	77.7	60.2					36	53.5	
	9			50.6	30.8	73.2	53.4					40.5	60.3	
	10			47.1	26.1	69.7	48.7	92.4	71.4	115.2	94.2	44	65	
	11					64.2	40	86.9	62.7	109.7	85.5	49.5	73.7	
AT105SA	5	68.6	52	103.6	87							33.2	49.8	
	6	61.9	42	96.9	77							39.9	59.8	
	7	55.3	32.1	90.3	67.1							46.5	69.7	
	8			83.7	57.1	116.6	90					53.1	79.7	
	9			77	47.4	109.9	80.3					59.8	89.4	
	10			70.4	37.2	103.3	70.1	137.3	104	171.2	138	66.4	99.6	
	11					96.7	60.1	130.6	94	164.6	128	73	109.6	
AT125SA	5	115.5	88	173.8	146.3							59.4	86.9	
	6	103.6	70.6	161.9	128.9							71.3	104.3	
	7	91.3	53.5	150.1	111.6							83.1	121.6	
	8			138.2	94.2	196.5	152.5					95	139	
	9			126.3	76.8	184.6	135.1					106.9	156.4	
	10			114.4	59.4	172.7	117.7	231	176			118.8	173.8	
	11					160.9	100.4	219.2	158.7	277.5	217	130.6	191.1	
12					149	83	207.3	141.3	265.6	199.6	142.5	208.5		

FLUID AUTOMATIC COMPONENT



流体自控元件

AT 单作用执行器输出力矩 / Single Action Actuator output Torque

		气源克服弹簧输出力矩 N.m The output torque of air source against spring N.m										弹簧输出力矩 N.m Spring output torque N.m	
气源压力 bar Air source pressure		3		4		5		6		7		0°	
型号 Model	数量 Quantity of Springs	0°		90°		0°		90°		0°		90°	
		起点 start	终点 end	起点 start	终点 end	起点 start	终点 end	起点 start	终点 end	起点 start	终点 end	起点 start	终点 end
AT140SA	5	174.7	131.2	262.5	219							88.5	132
	6	157	104.8	244.8	192.6							106.2	158.4
	7	133.9	78.4	227.1	166.2							123.9	184.8
	8			209.4	139.8	297.1	227.5					141.6	211.2
	9			191.7	113.4	279.4	201.1					159.3	237.6
	10			174	87	261.7	174.7	349.4	262.4	437.8	350.1	177	264
	11					244	148.3	331.7	236	419.5	323.8	194.7	290.4
12					226.3	121.9	314	209.6	401.8	297.4	212.4	316.8	
AT160SA	5	264.6	197.1	398.3	330.8							136.5	204
	6	237.3	156.2	371	289.9							163.8	244.9
	7	210	115.4	343.7	249.1							191.1	285.7
	8	182.7	74.6	316.4	208.3	450.1	341.9					218.4	326.5
	9			289.1	167.5	422.8	301.2					245.7	367.3
	10			261.8	126.7	395.5	260.4	529.2	394.1			273	408.1
	11					368.2	219.6	501.9	353.3	635.6	487	300.3	448.9
12					340.9	178.8	474.6	312.3	608.3	446.2	327.6	489.7	
AT190SA	5	429	320.4	644.5	535.9							217.4	326
	6	385.5	255.5	601	470.7							260.9	391.2
	7	342	190	557.5	405.5							304.4	456.4
	8			514	340.3	729.5	555.8					347.9	521.6
	9			470.6	275.1	686.1	490.6					391.3	586.8
	10			427.1	209.9	642.6	425.4	858.1	640.9	1073.6	856.4	434.8	652
	11					599.1	360.2	814.6	575.7	1030.1	791.2	478.3	717.2
12					555.6	295	771.1	510.5	986.6	726	521.8	782.4	
AT210SA	5	589.6	440.6	885.7	736.7							298.8	447.8
	6	529.8	351.1	825.9	647.2							358.6	537.3
	7	470.1	261.5	766.2	557.6							418.3	626.9
	8			706.4	468.1	1002.5	764.2					478.1	716.4
	9			646.7	375.5	942.8	671.6					537.8	809
	10			586.9	289	883	585.1	1179.1	881.2	1475.2	1177.3	597.6	895.5
	11					823.3	495.5	1119.3	791.6	1415.4	1087.7	657.4	958.1
12					763.5	406	1059.6	702.1	1255.7	998.2	717	1074.6	
AT240SA	5	924	690.5	1488.1	1154.6							468.5	702
	6	829.9	550.1	1294	1014.2							562.6	842.4
	7	736.7	409.7	1200.8	873.8							655.8	982.8
	8			1107.1	733.4	1571.3	1187.6					749.5	1123.2
	9			1013.4	593	1477.6	1057.2					843.2	1263.6
	10			919.7	452.6	1383.9	916.8	1848.1	1381	2312.2	1845.1	936.9	1404
	11					1290.2	776.4	1754.4	1240.6	2218.5	1704.7	1030.6	1544.4
12					1196.5	636	1660.7	1100.2	2124.8	1564.3	1124.3	1684.8	
AT270SA	5	1299.7	971.2	1952.4	1623.9							658.5	987
	6	1168	773.8	1820.7	1426.5							790.2	1184.4
	7	1036.3	576.4	1689	1229.1							921.9	1381.8
	8			1557.3	1031.7	2210	1684.4					1053.6	1579.2
	9			1425.6	834.3	2078.3	1487					1185.3	1776.6
	10			1293.9	636.9	1946.6	1289.6	2599.3	1942.3	3252	2595	1317	1974
	11					1814.9	1092.2	2467.6	1744.9	3120.3	2397.6	1448.7	2171.4
12					1683.2	894.8	2335.9	1547.5	2988.6	2200.2	1580.7	2368.8	



AT 单作用执行器输出力矩 / Single Action Actuator output Torque

气源克服弹簧输出力矩 N.m The output torque of air source against spring N.m												弹簧输出力矩 N.m Spring output torque N.m	
气源压力 bar Air source pressure		3		4		5		6		7		0°	90°
型号 Model	数量 Quantity of Springs	0°	90°	0°	90°	0°	90°	0°	90°	0°	90°	0°	90°
		起点 start	终点 end	起点 start	终点 end	起点 start	终点 end	起点 start	终点 end	起点 start	终点 end	起点 start	终点 end
AT300SA	5	1603	1183									800	1220
	6	1483	1066									920	1337
	7	1330	844	2132	1646							1073	1559
	8	1177	621	1979	1423	2780	2224					1226	1782
	9			1825	1201	2626	2002	3427	2803			1380	2004
	10			1625	977	2473	1778	3274	2579	4075	3380	1533	2228
	11					2320	1556	3121	2357	3922	3158	1686	2450
	12					2014	1077	2815	1878	3686	2679	1922	2929
AT350SA	5	2399	1739									1119	1859
	6	2120	1453									1478	2145
	7	1874	1096	3074	2296							1724	2502
	8	1627	738	2827	1938	4027	3138					1971	2860
	9			2580	1581	3780	2781	4979	3980			2218	3217
	10			2335	1223	3535	2423	4734	3622	5934	4822	2463	3575
	11					3288	2066	4487	3265	5687	4465	2710	3932
	12					3120	1537	4319	2736	5519	3936	2878	4461
AT400SA	5	3418	2479									1709	2648
	6	2922	1670									2205	3457
	7	2647	1239	4357	2949							2480	3888
	8	2372	806	4082	2516	5191	4225					2755	4321
	9			3806	2085	5515	3794	7224	5503			3031	4752
	10			3531	1652	5240	3361	6949	5070	8658	6779	3306	5185
	11					4963	2930	6672	4639	8381	6348	3583	5616
	12					4445	2190	6154	3899	8106		4101	6356

AT 双作用执行器输出力矩

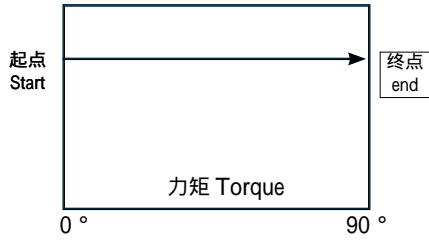
型号	输入气源电压 (单位: bar)						
	2	3	4	5	6	7	8
AT032DA	2.78	4.20	6.00	7.50	9.00	10.00	11.50
AT040DA	4.44	6.56	9.83	11.72	14.06	15.63	17.97
AT052DA	8.32	12.48	16.64	20.8	24.96	29.12	33.28
AT063DA	14.64	21.96	29.28	36.6	43.92	51.24	58.56
AT075DA	23.5	35.3	47	58.8	70.5	82.3	94
AT083DA	29.7	44.5	59.4	74.2	89.1	103.9	118.8
AT092DA	45.5	68.2	91.1	113.7	136.4	159.2	181.9
AT105DA	67.88	101.82	136.76	169.7	203.64	237.58	271.52
AT125DA	116.6	174.9	233.2	291.5	349.8	408.1	466.4
AT140DA	175.48	263.22	350.96	438.7	526.44	614.18	701.92
AT160DA	267.4	401.1	534.8	668.5	802.2	935.9	1069.6
AT190DA	430.96	646.44	861.9	1077.4	1292.9	1508.4	1723.8
AT210DA	592.2	888.4	1184.5	1480.6	1776.7	2072.8	2369
AT240DA	831.9	1220.8	1627.8	2030.7	2444.6	2848.6	3255.5
AT270DA	1305.4	1958.2	2610.9	3263.6	3916.3	4569	5221.8
AT300DA	1602	2403	3205	4006	4807	5608	6409
AT350DA	2399	3598	4798	5998	7197	8397	9596
AT400DA	3418	5127	6837	8546	10255	11964	13673



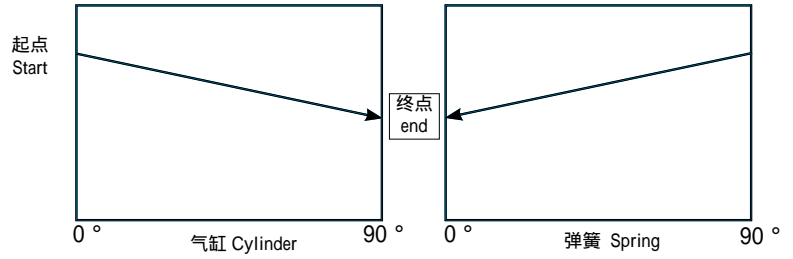


## 执行器力矩图 / Diagram of Output Torque

### 双作用 / Double action



### 单作用 / Single action



## 连接附件 / Accessory Connection



顶部连接尺寸符合 VDI/VDE3845NAMUR/ 标准，易于安装限位开关箱、定位器等附件。

Top connections size meet with VDI/VDE3845NAMUR/standard, easy to install limit switches box, positioner and other accessories.



侧面连接尺寸符合 VDI/VDE3845NAMUR 标准，适于安装电磁阀。

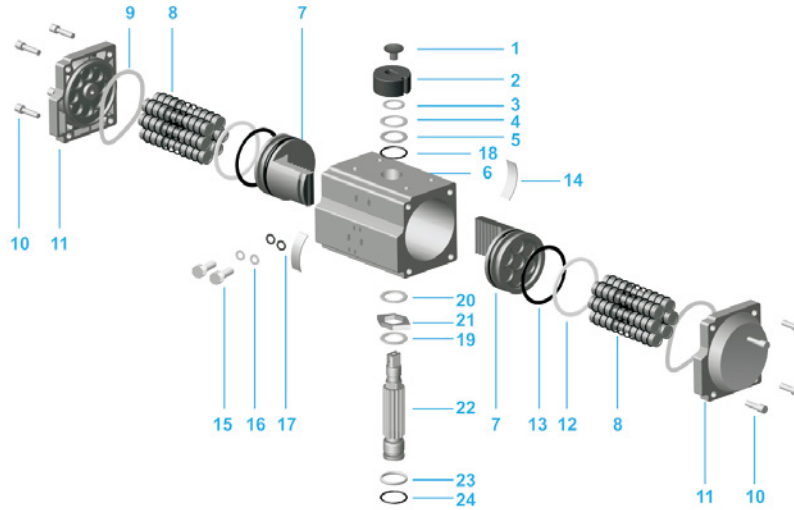
Flank connected size meet with VDI/VDE3845NAMUR standard, suitable for install solenoid valves.



底部连接尺寸符合 ISO5211 和 DIN3337 标准，方形和星形孔可以直接与阀门连接。

Bottom connection size meet with ISO5211 and DIN3337 standard, with square and star holes can be connected with the valve directly

## 零部件及材料 / Parts and materials



### Materials

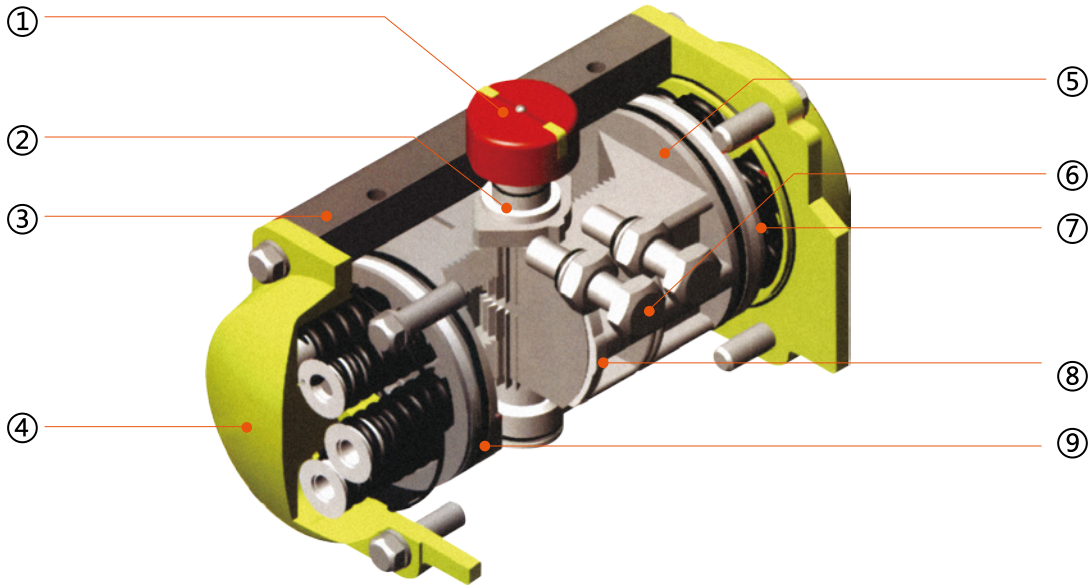
序号 Item	名称 Name	数量 Quantities	材料 Material	防腐处理 Antiseptic treatment	可选材料 Option material
1	指示器螺钉 Positioner nut	1	塑料 plastic		
2	指示器 Indicator	1	塑料 plastic		
3	卡簧 Clip	1	不锈钢 Stainless Steel		
4	垫圈 Washer	1	不锈钢 Stainless Steel		
5	外垫片 Outside seal	1	PTFE		
6	缸体 Body	1	6005-T5	硬质氧化等 Hard anodizing	
7	活塞 Piston	2	铸铝 Casting Aluminum	硬质氧化 / T6 Hard anodizing / T6	
8	弹簧总成 Spring	*	弹簧钢 Spring steel	浸漆 Epoxy resin coating	-----
9	端盖 O 圈 End cup o-ring	2	NBR		氟橡胶 / 硅橡胶 Viton/Silicone rubber
10	端盖螺栓 End cup bolts	8	不锈钢 Stainless Steel		
11	端盖 End cups	2	铸铝 Casting Aluminum	粉末喷涂等 Chromium + polyester coating	
12	活塞导向带 Guide	2	PTFE		
13	端盖 O 圈 End cup o-ring	2	NBR		氟橡胶 / 硅橡胶 Viton/Silicone rubber
14	活塞衬套 Bearing	2	POM		PTFE
15	调节螺栓 Bolts	2	不锈钢 Stainless Steel		
16	调节螺钉 O 圈 Bolts and washer	2	不锈钢 Stainless Steel		
17	调节螺钉 O 圈 O-ring	2	NBR		氟橡胶 / 硅橡胶 Viton/Silicone rubber
18	出轴小 O 圈 O-ring	1	NBR		氟橡胶 / 硅橡胶 Viton/Silicone rubber
19	出轴导向带 Drive shaft	1	PTFE		
20	内垫片 O-ring	1	PTFE		
21	六角挡块 Bearing	1	合金钢 Steel alloy		
22	齿轴 Driving shaft	1	合金钢 Steel alloy	镀镍 Nickel	不锈钢 Stainless Steel
23	出轴大导向带 Bearing	1	PTFE		
24	齿轴大 O 圈 O-ring	1	NBR		氟橡胶 / 硅橡胶 Viton/Silicone rubber



## 零部件介绍 / Parts introduction

FLUID AUTOMATIC COMPONENT

流体自控元件



**指标器：**

NAMUR 标准指示器，便于安装位置开关、定位器和其他附件安装便捷。

**输出轴：**

镀镍钢，高精度集成输出轴同时达到 NAMUR、ISO5211、DIN3337 标准。可根据客户要求定制不锈钢材料。

**气缸体：**

ASTM6005 挤压铝合金气缸体可进行硬质氧化、环氧喷漆（蓝、橙、黄按需求喷漆）、聚四氟乙烯涂层或镍，以满足不同需求。

**端盖：**

压铸铝合金金属粉末涂层的各种颜色，聚四氟乙烯涂层或镍。

**活塞：**

双活塞架，采用压铸氧化铝或铸钢，安装位置对称，操作迅速，使用寿命长，换向简单的活塞即可改变方向。

**行程调节：**

两个独立行程调节螺钉，可方便、精确度  $\pm 5^\circ$  开关位上。

**高性能弹簧：**

采用进口优质材料，涂层预处理组合或组装，拆装简单安全。采用优质材料，涂层处理，预压装配。耐腐蚀能力强，使用寿命长，单作用式作动器可安全拆卸，并可改变弹簧数量

以满足不同扭矩输出范围。

**轴承、导杆：**

低摩擦、长寿命复合材料，避免与金属与金属直接接触，维修更换简单方便。

**密封圈：**

在室温条件下使用丁腈橡胶，在高温或低温条件用维通或硅橡胶。

**Indicator:**

NAMUR standard indicator for easy installation of position switches, locators and other accessories.

**Output Shaft:**

Nickel-plated steel, high-precision integrated output shaft at the same time meet NAMUR, ISO5211, DIN3337 standards.

Can be customized according to customer size and stainless steel materials.

**Cylinder Body:**

ASTM6005 extruded aluminum alloy cylinder body can be hard oxidation, epoxy spray paint (blue, orange, yellow sprayed on request), PTFE coating or nickel to meet different requirements.

**End Cap:**

Die-cast aluminum alloy metal powder coating of various colors, PTFE coating or nickel plating.

**Piston:**

Double-piston rack, with die-cast aluminum oxide or cast steel galvanized, the installation position symmetrical, rapid operation, long service life, simply reverse the piston can change direction.

**Stroke Adjustment:**

Two independent stroke adjustment screw can be convenient, accurate  $\pm 5^\circ$  regulation on/off position.

**High-performance spring:**

Imported high-quality materials, coating pretreatment combined type assembly, demolition simple and safe.

Using high quality materials, coating treatment, pre-press assembly. Has strong corrosion resistance and service life. It is safe and easy to disassemble the single-acting actuator and change the number of springs to satisfy different torque output range.

**Bearings, guides:**

Low friction, long life composite materials, to avoid direct contact with metal and metal, maintenance and replacement is simple and convenient.

**Sealing:**

At room temperature working conditions using NBR, In high temperature or low temperature with viton or silicon rubber.

## 气动执行器 / AT PNEUMATIC ACTUATOR

### 设计特征

气动执行器集新技术、新材料、新理念于一体的研究、开发、设计，具有以下特点：  
符合：ISO 5211, DIN 3337 和 VDE 3845, NAMUR 标准。  
挤压高强度铝缸体，内表面精磨硬质阳极氧化，使用寿命长，摩擦系数低，动作快。  
美观紧凑，现代造形，多种规格的产品，使选择更加经济。  
所有活动表面均采用优质轴承制造，摩擦小，使用寿命长，无噪音。  
两种独立行程调整机构，便于调整  $\pm 5$  度和完全开启或关闭位置。  
它们有双作用和单作用（弹簧返回），单作用正常开关。  
NAMUR 标准多功能位置指示器可显示所有附件的安装和输出。  
预压加载弹簧，安装、拆卸安全方便。  
活塞和端盖采用压铸铝合金，强度高，重量轻。  
更换密封材料可用于高温或低温场合。  
电磁阀可以直接安装，无需连接板。

### Design Features

Pneumatic actuator are integrated of new technologies, new materials, new innovative ideas based on the research, development, design, has the following characteristics:

Comply with the standards of: ISO5211, DIN3337 and VDE-3845, NAMUR standards.

Extruded high-strength aluminum cylinder body, the inner surface of fine grinding and hard anodized, long service life, low friction coefficient, fast action. Beautiful compact, modern styling, multi-standard products make the selection more economical.

All active surfaces are made of high quality bearings, low friction, long life, no noise.

Two independent stroke adjustment mechanism for easy adjustment of  $\pm 5$ deg and fully open or closed position.

They are available in double-acting and single-acting (spring return), single-acting with normally closed and normally open.

The NAMUR standard multi-function position indicator visualizes the installation and output of all accessories.

Pre-compression load spring, installation, demolition of safe and convenient.

Piston and end caps using die-cast aluminum alloy, high strength, light weight.

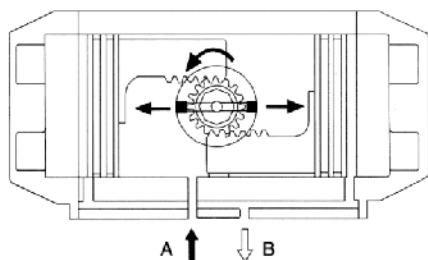
Change the seal material can be used in high temperature or low temperature applications.

Solenoid valve can be installed directly without connection plate.



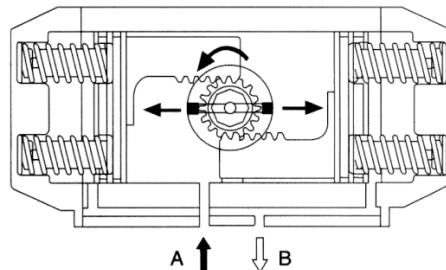
## 工作原理 / working principle

### 双作用式 Double-acting

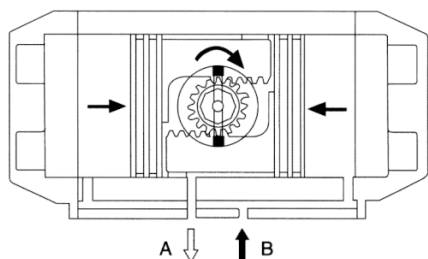


压缩空气由 A 口输入，使左右活塞向相反方向运动，输出轴逆时针方向运动，打开阀门，两活塞侧面的空气由 B 口排出。  
When the air pressure from the A port to force the piston to move separately toward the end cap direction, the air is discharged from the B port to obtain counterclockwise rotation

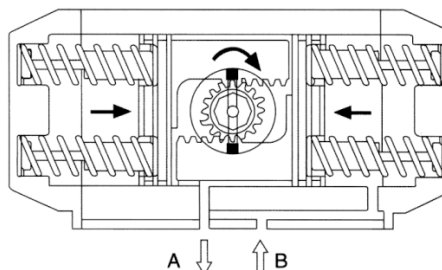
### 单作用式 Single-acting



压缩空气由 A 口输入，使左右活塞向相反方向运动，输出轴逆时针方向转动，打开阀门，两活塞侧面的空气由 B 口排出。  
when the air pressure from the A port to force the piston to move separately toward the end cap while compressing the spring, the air is discharged from the B port to obtain counterclockwise rotation.



压缩空气由 B 口输入，使左右活塞向中心移动，输出轴顺时针方向运动，关闭阀门，两活塞中间的空气由 A 口排出。  
when the air pressure from B port to force the piston closed, the air from the A port discharge, so as to obtain clockwise rotation.



失气或失电时，由于弹簧的作用使两活塞向中心移动，输出轴顺时针方向转动，关闭阀门，空气由 A 口排出，B 口进气可加速度关闭阀门。  
Loss of air or loss of electric. The spring closed the piston. The air discharge from the A. To obtain a lockwise rotation.



工作原理和旋转方向, 标准旋转方向顺时针关闭逆时针打开

Working principle and direction of rotation Standard rotation direction is clockwise closed, counterclockwise open.

## 双作用执行器选型示例 / Double-acting Actuator Selection Example

首先确定阀门开启和关闭所需要的力矩, 在正常使用条件下, 推荐系数为 15~20%。对水蒸汽或非润滑液体介质增加至 25% 安全值。非润滑的浆料液体介质增加至 40% 安全值; 非润滑的颗粒料介质增加至 80% 安全值。然后根据使用的气源压力, 查找双作用式或单作用式输出力矩表, 就可以得到准确的气动执行器型号。单作用执行器输出力矩表中, 弹簧输出力矩终点栏中的力矩即为关闭阀门的力矩。

- 1、球阀所需力矩 = 280N.m
- 2、使用介质: 水
- 3、安全系数 (20%) = 280 (1+20%) = 336N.m
- 4、气源压力 = 4bar
- 5、查双作用式输出力矩表的型号: AT140DA、在 4bar 气源压力下输出力矩是 350.96N.m。

First confirm the torque which is required to open and close the valve. Under normal service conditions, the recommended coefficient is 15~20%. Increase the safe value of vapor or non-lubricated liquid medium to 25%. The safe value of non-lubricating slurry liquid medium increased to 40% : non-lubricating particle material medium's safe value increased to 80%. Based on the use of air source pressure, seeking for the sheet of double acting or single acting output torque , the accurate pneumatic actuator type will be obtained. In the sheet of single-acting actuator output torque, the spring output torque at the end bar is the torque for closing valve.

1. Required torque of ball valve = 280n.m
2. Medium: water
3. Safety factor (20%) = 280 (1+20%) = 336n.m
4. Air source pressure = 4bar
5. Check the model of double-acting output torque: AT140DA, output torque is 350.96N.m at 4bar air pressure.

## 单作用执行器选型示例 / Single Acting Actuator Selection Example

首先确定阀门开启和关闭所需要的力矩, 在正常使用条件下, 推荐系数为 15~20%。对水蒸汽或非润滑液体介质增加至 25% 安全值。非润滑的浆料液体介质增加至 40% 安全值; 非润滑的颗粒料介质增加至 80% 安全值。然后根据使用的气源压力, 查找双作用式或单作用式输出力矩表, 就可以得到准确的气动执行器型号。单作用执行器输出力矩表中, 弹簧输出力矩终点栏中的力矩即为关闭阀门的力矩。

在单作用执行器的选型过程中, 如果能够了解阀门在开启、运行和关闭时的扭矩分配, 我们就可以更加经济, 更加合理地选配执行器。

例如

阀门需要力矩 = 80N.m                      空气行程 0° = 114.4N.m > 104N.m  
安全力矩 80 (1+30%) = 104N.m              空气行程 90° = 59.4N.m > 32N.m  
打开后扭矩 104\*30% = 32N.m              弹簧行程 90° = 173.8N.m > 32N.m  
气源件压力 = 4bar                      弹簧行程 0° = 118.8N.m > 104N.m

我们可以选择 AT125 SA K10 以上数据显示可以满足

该蝶阀的正常启闭。

注: 单作用执行器弹簧复位过程中, 执行器 B 口通气不影响执行器输出力矩, 相反帮助弹簧的复位。

First confirm the torque which is required to open and close the valve. Under normal service conditions, the recommended coefficient is 15~20%. Increase the safe value of vapor or non-lubricated liquid medium to 25%. The safe value of non-lubricating slurry liquid medium increased to 40% : non-lubricating particle material medium's safe value increased to 80%. Based on the use of air source pressure, seeking for the sheet of double acting or single acting output torque , the accurate pneumatic actuator type will be obtained. In the sheet of single-acting actuator output torque, the spring output torque at the end bar is the torque for closing valve.

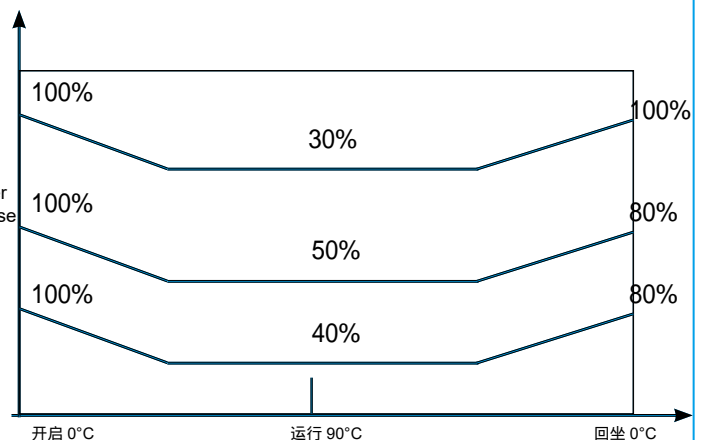
During the process of selecting single-acting actuator, we can choose actuator more rationally and economically if the torque distribution is known when the valve is opening, running and closing.

Such as

Required valve torque = 80n.m Air stroke 0° = 114.4N.m > 104n.m  
Safety torque 80 (1+30%) = 104n.m Air stroke 90° = 59.4N.m > 32n.m  
After opening torque 104\*30% = 32n.m Spring stroke 90° = 173.8N.m > 32n.m  
Air source pressure = 4bar Spring stroke 0° = 118.8N.m > 104n.m

We can choose RAT125 SA K10 above data can meet the requirement for butterfly valve's normal opening and closing process.

PS: During the single-acting actuator spring resetting process, the ventilation of actuator port B does not affect the output torque of the actuator, but on the contrary, it helps to reset the spring.



## 限位开关 / limit switch



### 产品特点

限位开关设计先进，坚固美观，质量上乘，具有以下六大特点：

- 1、指示器直观醒目，防水可靠；
- 2、“快速位置”凸轮通过花键轴和弹簧安装，不用工具即可方便调整；
- 3、多接点端子排，有 8 个标准接点，接线安全、方便；
- 4、标准的双重电线接口；
- 5、装有防脱螺栓，拆装时螺栓附在上面不会脱落；
- 6、不锈钢主轴连接部分及安装支架均符合 NAMUR 标准。

### Product features:

The limit switch has a advanced design, solid structure and artistic appearance. Also, it has an excellent quality, with the following characteristics:

- 1.The indicator is visually intuitive and eye-catching, and it's water-proofed.
2. Quick position CAM is installed through spline shaft and spring, which can be easily adjusted without tools;
- 3 multi-contact terminal row, 8 standard contacts, safe and convenient wiring;
4. Standard double wire interface;
5. Equipped with anti-trip bolts, which will not fall off when attached to them during disassembly;
- 6 the connection part and mounting bracket of the stainless steel main shaft meet the standards of NAMUR.



型号 /Model	APL-210N/APC-310N	APL-410N-EX
壳体防爆等级 /shell's anti-explosion rate	IP 65	Exd II BT4
温度 /temperature	-25°C~85°C	
接线端口 /cable entry	G1/2" G3/4"	
接线端子 /terminal	8	
位置指示 /position indicator	0~90°C	
微型开关 /micro switch	机械式 (Mechanical)	
电位计 /potentiometer	1KΩ	
电流反映 /current feedback	4~20mA	

### 限位开关订购码 / APL limit switch ordering code

		APL	2	10	N	EX
APL	限位开关					
	规格 / Size					
	2					
	3					
	4					
10	机械式微动开关 Mechanical micro switch					
N	外壳为螺栓固定 The housing is bolted					
EX	EX 防爆 EX anti-explosion					

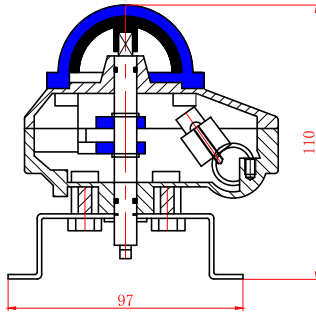
## 外形尺寸 / Overall dimension

FLUID AUTOMATIC COMPONENT

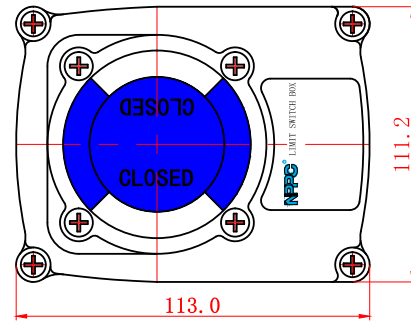
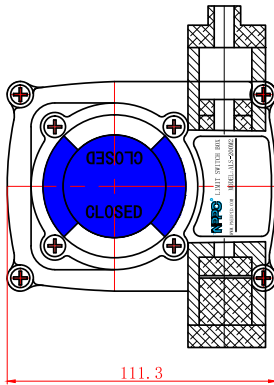
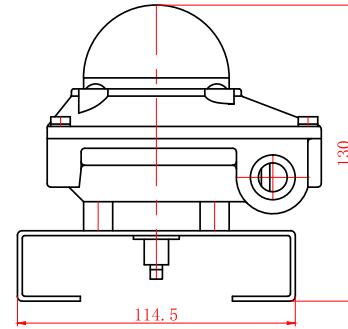
流体自控元件



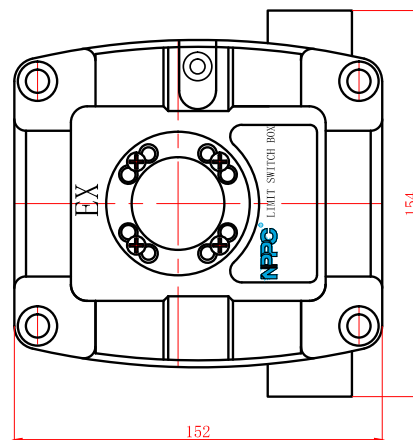
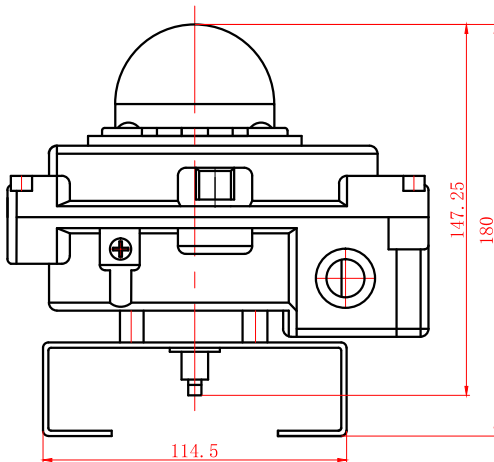
**APL-210N**



**APL-310N**



**APL-410N**



## PA 系列角座阀 / PA Series angle seat valve



### 选择流动方向 A 时的特点:

1. 选择该流动方向时, 可提高该产品的使用寿命。
2. 当工作介质为液体时, 选择该流向可防水锤冲击。
3. 通径为  $\Phi 15 / \Phi 20 / \Phi 25$  的产品, 工作压力须在 0.3MPa 以下, 否则须选择双作用执行器。
4. 通径为  $\Phi 32 / \Phi 40$  的产品, 执行器须选择双作用  $\Phi$  尺寸。
5. 通径为  $\Phi 50$  的产品, 执行器须选择双作用  $\Phi 125$  尺寸。

### 选择流动方向 B 时的特点:

当工作为蒸气或气体时, 选择该流动方向时, 可提高该产品的流体密封性, 但由于阀体中 V 型密封圈长时间接触工作介质, 从而对产品使用寿命有一定的影响, 另外, 工作介质为液体时防水锤冲击。

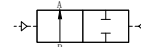
### Flow direction below the seat(direction A)

1. Valves with flow direction below the seat(direction A)ensure long service life.
2. Valves used for liquid media are waterhammer-free.
3. Valves with orifice DN15/DN20/DN25 are ideal for the operating pressure of 0.3MPa.
4. Valves with orifice DN32/DN40 are operated with double-acting actuators DN100.
5. Valves with orifice DN50 are operated with double-acting actuators DN125.

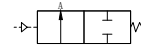
### Flow direction above the seat(direction B)

Valves with direction B provide high sealing integrity,used for steam and gases media. There is a danger of waterhammer, when the valves used for liquid media.

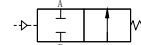
### 双作用型 / Double acting



### 常闭型 / Normally closed



### 常开型 / Normally open



## PA 系列订购码 / PA Series ordering code

		PA10	P	025	D	1	5	NC
<b>系列 / Series</b>								
PA10	角座阀 / Angle seat valve							
PA20	截止阀 / Stop valve							
<b>气控头 / Solenoid material</b>								
P	塑料 / Plastic							
S	标准不锈钢 / stainless steel							
SL	圆型不锈钢 / round stainless steel							
<b>接管口径 / Joint pipe bore</b>								
10	3/8							
15	1/2							
20	3/4							
25	1							
32	1 1/4							
40	1 1/2							
50	2							
65	2 1/2							
<b>阀体材质 / Valve body material</b>								
D	锡青铜 / Tin bronze							
F	不锈钢 / Stainless steel							
<b>动作方式 / Acting type</b>								
1	单动 / Single-acting							
2	双动 / Double-acting							
<b>接管方式 / Port type</b>								
5	法兰 / Flange							
6	外螺纹 / Male thread							
7	内螺纹 / Female thread							
<b>常闭 / Normal close</b>								
NC	常闭型 / Normal close							
NO	常开型 / Normal open							

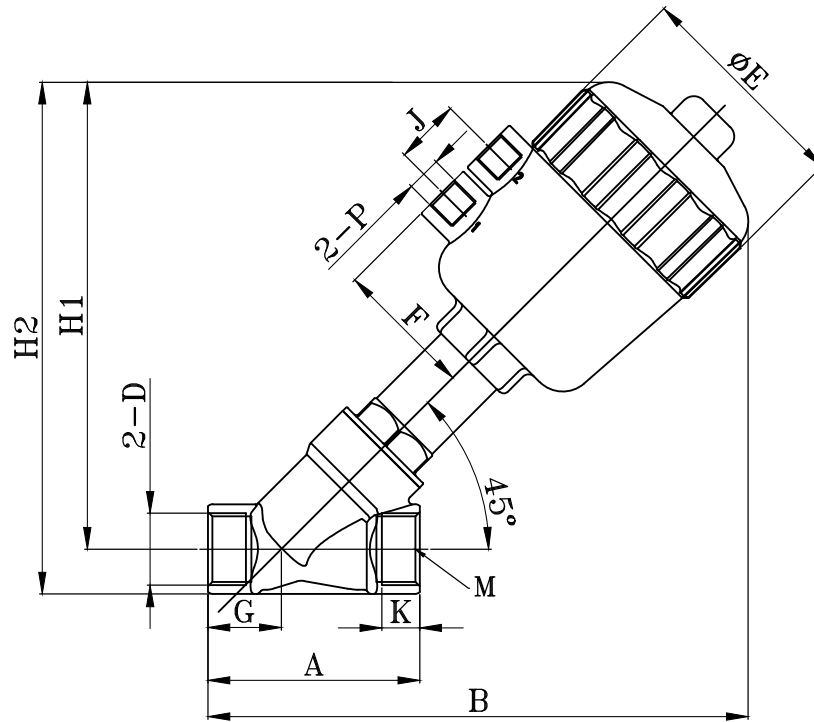


综合参数 / General data

FLUID AUTOMATIC COMPONENT

流体自控元件

型号 Model	接管口径 Joint pipe bore	螺纹 screw thread	执行器缸径 Actuator size(mm)	流通孔径(mm) Orifice size(mm)	Kv 值 Kv	最小控制压力 (bar) Min.operating pressure(bar)	最大操作压力 (bar) Max.operating pressure(bar)	重量 (KG) Weight(kg)
PA10P PA10S PA10SL	-10	G3/8	40	15	4.4	4.8	13	0.8
	-15	G1/2			4.8	4.3	16	0.7
	-20	G3/4	40	20	7.9	4.8	6.5	0.9
			50		8	4.3	11	0.95
			63		10	4.2	16	1.6
	-25	G1	63	25	19	4.2	11	1.9
			80		20	5.0	16	2.5
	-32	G1 1/4	63	32	27	4.2	6	2.5
			80		28	5.0	15	3.0
			80		38	5.0	12.5	3.5
	-40	G1 1/2	100	40	42	4.4	16	6.0
			125		42	3.2	7.2	9.5
			100		55	4.4	7.2	7.5
	-50	G2	125	50	55	3.2	10	10
125			90		3.2	5.2	11.5	



标准口径 Orifice size(DN)	接管口径 (D) Size of actuator(D)	执行器缸径 Actuator size(mm)	B	ΦE	F	A	J	P	H1	H2	K	G	M
15	G3/8	Φ40	153	56	33	68	24	G1/8	130	144	12	22.5	27
	G1/2	Φ50	162	66	44			G1/4	140	153			
20	G3/4	ΦV40	161	56	33	78		G1/8	134	150	14	27	33
		Φ50	170	66	44			G1/4	143	160			
		Φ63	200	82	51			G1/4	172	189			
25	G1	Φ50	176	66	44	90		G1/4	147	168	18	28	40
		Φ63	205	82	51		G1/4	176	197				
		Φ80	221	102	60		G1/4	193	213				
32	G1 1/4	Φ63	220	82	51	110	G1/4	185	210	22	35	50	
		Φ80	237	102	60		G1/4	202	227				
		Φ63	230	82	51		120	24	G1/4				190
Φ80	245	102	60	30	G1/4	207		235					
Φ100	290	128	73	G1/4	260	288							
40	G1 1/2	Φ125	320	154	86	144	30	G1/4	289	317	24	39	55
		Φ63	248	82	51		24	G1/4	202	237			
		Φ80	265	102	60		30	G1/4	219	254			
50	G2	Φ100	311	128	73	175	24	G1/4	317	352	24	46	70
		Φ125	341	154	86		30	G1/4	347	382			
		Φ80	286	102	60		24	G1/4	229	271			
65	G2 1/4	Φ100	334	128	73	175	30	G1/4	344	386	24	57	85
		Φ125	364	154	86		24	G1/4	374	416			
		Φ80	286	102	60		30	G1/4	344	386			

本公司保留对产品改进的权利